

# Eaglemont

- SOUTHERN WALKING CIRCUIT -



Banyule City Council is proud to acknowledge the Wurundjeri Woi-wurrung people as traditional custodians of the land and we pay respect to all Aboriginal and Torres Strait Elders, past, present and emerging, who have resided in the area and have been an integral part of the region's history.

Circuit		Seating	
Cafes		Informal bicycle route	
Art mural		Pedestrian underpass	
Train station		Shopping village	
Train bridge		Bicycle parking	



# Eaglemont



Local village



Tree-lined streets



Seasonal colour



Urban gardens



Cafes and bar



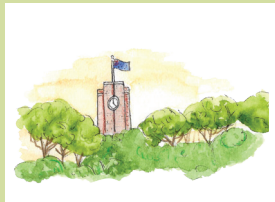
Benches



Local architecture



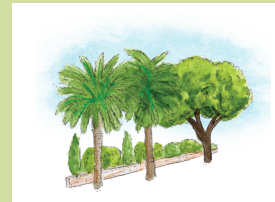
Murals



Local views



Brooke St Reserve



Established trees



New plantings



Currawong



Eastern spinebill



Dog walking (on lead)



Stroller friendly

## Eaglemont southern Walking Circuit

### Information

- Walk, run, scoot or walk the dog on leash.
- Distance: Approx 3km/1 hour leisurely walk.
- Surface: Concrete path.
- Gradient: Mostly flat.
- Difficulty: Easy to Moderate.

### Be Prepared

- Don't forget a hat, water bottle, sun protection and sunscreen.
- Be aware of traffic when crossing streets and carparks.
- When walking with your dog, ensure you maintain effective control over your pet at all times and please pick up doggy's poo!
- Enjoy your surroundings – have fun!

### Transport

- Accessible carparking: Silverdale Road near Alandale Road intersection
- Bike parking: Eaglemont Railway Station and Silverdale Road shopping strip
- Bike route: Informal route along neighbourhood streets connecting Watsonia to East Ivanhoe via Alandale Road, The Eyrie and Locksley Road

More information on Council's parklands, reserves and walking trails can be found at [banyule.vic.gov.au](http://banyule.vic.gov.au)