

# Banyule Banner

March 2024

8	Waste services
14	Public Toilet Plan
23	Anzac Day in Banyule



# Mayor's Message

## Mayor Cr Tom Melican



### Be the future of Banyule

Banyule Council has a committed group of nine councilors and a workforce of 1,000 hardworking people who do an amazing job delivering hundreds of services and projects every day. We also have around 130,000 wonderful people who live and work in Banyule and contribute enormously to our success.

We're forming Banyule ThinkTank to tap into that amazing knowledge, experience and expertise. It will help draw up plans to direct Council's work over coming years.

The ThinkTank will work best if it is representative of the diversity that exists in the Banyule community. We want to hear from business owners and people in conventional leadership roles, but it is as important we listen to people who

may not always have been heard so loudly - young people, older people, those with disability.

I encourage you to find your voice, we are ready to hear it. Turn to page 3 for details.

### Building begins on Rosanna Library

It's a bit sad seeing the old library being demolished; it served us well for 50 years. However, libraries and our community have changed and the new facility will be much more than a library. Spread over three levels, it will have services for all ages and interests. The ground floor will be a family hub with Maternal and Child Health services and Banyule Toy Library. The new library will deliver a huge boost to the area and make Rosanna a much more vibrant area.

I want to thank you all for your patience, it has taken longer than

we expected to get the planning details right for this important community asset. Construction should be complete by the end of next year. In the meantime, the pop-up library at 56 Beetham Parade is doing a great job.

### Tonnes to celebrate

Banyule's FOGO service for recycling of household food and organic waste has been a huge success. We're sending less waste to landfill and we're producing high-quality compost for farms and parks. In addition to the obvious environmental advantages, we're spending less on landfill too.

I would like to thank all Banyule residents for supporting this important change, we couldn't have done it without you. Learn more about Council's waste management on pages 8 and 9.

## Stay in touch with us online

 Email newsletters

[banyule.vic.gov.au/subscribe](http://banyule.vic.gov.au/subscribe)



@BanyuleCouncil


## Have your say on important projects and local initiatives



[shaping.banyule.vic.gov.au](http://shaping.banyule.vic.gov.au)

COVER: Turn to page 19 to read about the upcoming drawing intensive in Banyule.

## Council Meetings

 Upcoming dates:  
8 April  
29 April

 From 7pm

 Council Chambers @ Ivanhoe Library and Cultural Hub,  
275 Upper Heidelberg Road,  
Ivanhoe

For agendas, minutes, public question time and request to speak forms, visit [banyule.vic.gov.au/CouncilMeetings](http://banyule.vic.gov.au/CouncilMeetings)

Banyule City Council is proud to acknowledge the Wurundjeri Woi-wurrung people as Traditional Custodians of the land and we pay respect to all Aboriginal and Torres Strait Islander Elders, past, present and emerging, who have resided in the area and have been an integral part of the region's history.

Our community is made up of diverse cultures, beliefs, abilities, bodies, sexualities, ages and genders. Council is committed to access, equity, participation and rights for everyone; principles which empower, foster harmony and increase the wellbeing of an inclusive community.





# Banyule Community Forums

**We're hosting two informal community forums for you to speak with some of our Councillors.**

Talk about current issues, provide feedback and tell us your ideas for making Banyule a better place.

**No bookings required.**

📅 Tuesday 16 April, 6.30pm – 8pm

📍 WaterMarc ground floor  
1 Flintoff Street, Greensborough

📅 Tuesday 30 April, 6.30pm – 8pm

📍 Bellfield Community Hub ground floor,  
15 Daphne Crescent, Bellfield



## Stay connected and win

**Every month we publish a handy eNewsletter, packed full of local events, news and updates across Banyule – and if you're a subscriber, you could win!**

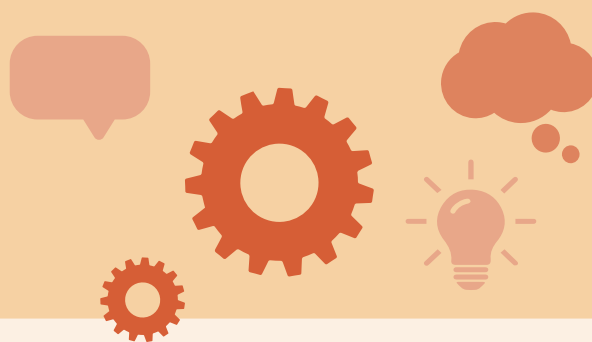
From March to May we're giving away 6 x \$50 shop local giftcards. It's our way of saying thank you for staying connected with what's happening in your community.

To be in the running to win, simply subscribe to Banyule eNews on Council's website. If you're already a subscriber, you're already in the draw to win.

Sign up at [banyule.vic.gov.au/subscribe](https://banyule.vic.gov.au/subscribe) to get news to your inbox and to win.

# Shaping Banyule

Get involved in local projects



## A unique opportunity for Chelsworth Park

**Chelsworth Park in Ivanhoe is home to nine Banyule sporting clubs and is a recreation space for the whole community.**

Ivanhoe Grammar School is a key tenant which has a lease with Council to use the park for their sports program during school terms until 2034.

The two sports pavilions on site require significant upgrading to make them fit-for-purpose, safe, inclusive and accessible.

Council has a unique opportunity to work in partnership with Ivanhoe Grammar to deliver improved community sports infrastructure for future generations. This would otherwise not be possible without significant cost to Council.



Have your say about this project. Scan the QR code or head to [shaping.banyule.vic.gov.au/CPB](https://shaping.banyule.vic.gov.au/CPB) and click 'follow' to get updates.

### Your council contact:

**Jacinda Hunt**, Sports and Leisure  
Contracts Lead

Phone: **0468 640 486**

Email: [jacinda.hunt@banyule.vic.gov.au](mailto:jacinda.hunt@banyule.vic.gov.au)



## Active Banyule for health and wellbeing

Sport and recreation play a key role in the health and wellbeing of our community.

Whether it's playing sport, walking in the park or being part of a dance group, research shows that being active, connecting with others and spending time in nature positively impacts our physical, mental and emotional health.

To help our community participate more often in sport and recreation activities, we are developing Active Banyule, a new Sports and Recreation Plan.

So we can get this right, we're keen to understand what's important to you.

Have your say up until 5 April via the survey at [shaping.banyule.vic.gov.au/ActiveBanyule](https://shaping.banyule.vic.gov.au/ActiveBanyule)

### Your Council contact:

**Melinda Ramsay**, Sports and Recreation  
Coordinator

Phone: **9457 9818**

Email: [melinda.ramsay@banyule.vic.gov.au](mailto:melinda.ramsay@banyule.vic.gov.au)







# Community flu immunisation

## Let's work together to reduce flu in our community



Flu season will soon be upon us. To help you stay healthy, Council is running flu vaccination clinics from April to June. These clinics are for flu vaccines only. The flu vaccine is free for children aged 6 months to 5 years and \$25 for everyone aged 5 and older.

Flu vaccine will also be available to parents and their children at public sessions when they are booked in for routine childhood immunisations.

Annual flu vaccination is recommended for adults and children aged over six months. It helps protect yourself, your family and your community.

### Flu vaccination clinics

 **WaterMarc, 1 Flintoff St, Greensborough**  
 Saturday 13 April, 10am – 12pm  
Tuesday 30 April, 5.30pm – 7pm

 **Ivanhoe Library and Cultural Hub**  
 Wednesday 1 May, 5.30pm – 7pm

Check for more sessions and book at [banyule.vic.gov.au/immunisation](https://banyule.vic.gov.au/immunisation) or phone **9475 9964**.



### Corporate flu vaccinations

Help your employees stay healthy this flu season! For just \$25 per vaccine, Council will send a nurse to your workplace to vaccinate your staff against the flu. All you need is a minimum booking of 20 people. Avoid staff absences and illness by organising a flu clinic today. Call **9457 9951** or email [immunisation@banyule.vic.gov.au](mailto:immunisation@banyule.vic.gov.au)

## Be rewarded for sharing your insights

### Your local knowledge, wisdom and experiences can help shape the future of Banyule.

We're calling on locals to join the Banyule ThinkTank – a group that will deepen Council's understanding of what's needed locally and where to focus Council's attention.

**Members of the ThinkTank will be rewarded up to \$350 for participating in four in-person sessions, starting in July.**

Everyone is welcome to apply – you just need to live, own a business or pay rates in Banyule.

At the end of the project Council will publicly respond to each of the ThinkTank's recommendations, which will help develop our next Council Plan, Municipal Public Health and Wellbeing Plan, Asset Plan, Financial Plan and Budget.

If you want to join the ThinkTank and shape the future of Banyule, register your interest online: [shaping.banyule.vic.gov.au/BanyuleFutures](https://shaping.banyule.vic.gov.au/BanyuleFutures)





# Facelift for East Ivanhoe

**We're giving East Ivanhoe shopping village a facelift and improving pedestrian safety along the Lower Heidelberg Road strip by upgrading footpaths and side-street crossings. New seating and street planting will complete the improvements.**

There will be new pedestrian crossings at Warncliffe and Wilfred roads and Burton Crescent, and a zebra crossing at Carmichael Street.

The upgrade should be finished by the end of the year. We'll work on small segments at a time to minimise disruption. While there will be some short-term inconvenience as we make our way along the shopping strip, the result will be a much safer and more visually appealing streetscape.

For the latest on the project, visit [shaping.banyule.vic.gov.au/eastivanhoe](https://shaping.banyule.vic.gov.au/eastivanhoe)



## Watsonia Town Square update

Resurfacing Watsonia Road near the library.

Watsonia Village, with its delicious eateries and mix of shops, is still open for business while we're making great progress on building the new Town Square.

The construction project is running on schedule. We're getting closer to being able to enjoy Watsonia's fantastic new open spaces and facilities, which will include a playground outside the library, an accessible toilet block, shady paths and seating.

This month Watsonia Road will reopen to traffic in both directions. It has been one-way going towards Grimshaw Street since we removed the Morwell Avenue

roundabout in January. The new Watsonia Road will provide better pedestrian and vehicle movement around the Town Square. We worked on one side of the road at a time to maintain access to shops and minimise disruption as much as possible.

### Parking in Watsonia Village

Angle parking is available in Morwell Avenue, opposite the RSL, while construction is underway. There are also 32 parking spaces in the temporary car park located on Morwell Avenue on the top side of High Street.

Check out what's coming up and sign up to receive updates on the project at [shaping.banyule.vic.gov.au/WatsoniaTownSquare](https://shaping.banyule.vic.gov.au/WatsoniaTownSquare)





# National Volunteer Week 2024

## Something for Everyone: 20 – 26 May

National Volunteer Week is a chance for us to recognise the vital work of volunteers in our community and to say thank you to everyone who puts their hand up to make Banyule a better place for everyone.

This year's theme, Something for Everyone, recognises the diverse talents everyone brings to volunteering. Whether you are drawn to education, sports, caring, town planning or environment projects, there's a place for you to volunteer in Banyule.

We invite volunteers working in Banyule to our Volunteer Celebration in May.



## Banyule Volunteer Celebration

📅 Wednesday 22 May, 6pm

📍 The Great Hall, The Centre Ivanhoe,  
275 Heidelberg Road, Ivanhoe

Bookings open Tuesday 2 April. Phone **9457 9955**  
or head to [trybooking.com/1165760](https://trybooking.com/1165760)

The voluntary sector is an important part of Australia's economy. The level of volunteering can indicate the cohesiveness of the community.

**Around 20% of Banyule residents report doing some form of voluntary work. This is higher than the average for Greater Melbourne!**

Search volunteering opportunities at  
[banyule.vic.gov.au/Volunteering](https://banyule.vic.gov.au/Volunteering)



"I always wondered, what do you do when you retire?"

For Viewbank resident Mee Choo the answer lies in volunteering, dancing and singing.

Mee Choo's experience in nursing and exercise training is appreciated in Council volunteer roles at Ivanhoe Seniors Exercise Park, where she helps people use the equipment correctly, and Coffee Connect sessions in Rosanna and Bellfield.

"At Coffee Connect, anybody can come and talk about any issues. Sometimes we just talk, but I can connect

them with Council services or help them report a problem."

With her skills in English, Mandarin and Malay, Mee Choo is also a volunteer English tutor at a local school. When she's not volunteering, you might find her at Banyule U3A's Scottish Dancing or Singing for Pleasure. She also likes a spot of Tai Chi.

"Volunteering is very rewarding. I enjoy helping others. I like the social connection and I update myself on things happening in our community."

# Supporting Banyule

Banyule's waste services are used by every household, school and business in the municipality.



## Banyule's waste by numbers

- 4,000,000+ kerbside bins collected each year
- 53,000+ properties serviced
- 26,000+ hard waste bookings annually
- 20,000+ bins collected each day
- 200+ bins collected hourly by each driver

## FOGO – 2 years on

It's nearly two years since we introduced the kerbside Food Organics, Garden Organics (FOGO) service. How is Banyule faring? Before FOGO, food scraps, garden waste and organic matter were disposed of in rubbish bins and sent to landfill. Organic matter in landfill releases methane, a powerful greenhouse gas that contributes to climate change.

Now, Banyule's food waste can go in the FOGO bin along with garden waste. FOGO waste is composted and turned into nutrient dense soil fertilizers to use on farms, parks, and gardens.

## A<sup>+</sup> for Banyule FOGO!

We're sending 4,500 tonnes less of rubbish to landfill since we introduced FOGO. We're diverting 10% more from landfill - up from **52%** to **62.6%**. An amazing achievement by Banyule!



## Bin refreshers

### Six ways to be a FOGO champ

1. If you have a lawn or garden, place grass clippings or garden prunings in the bin first and in layers between food waste
2. Store your bin in the shade and make sure the bin lid stays closed
3. Let hot food cool down before placing it in your caddy or FOGO bin
4. Line your caddy with newspaper or paper towel
5. Consider keeping meat or seafood in the fridge or freezer until bin night
6. A sprinkle of bicarb soda in your caddy or bin can help absorb potential odours



## Recycling Myths Busted

### Can I place pizza boxes in my recycling bin?

**Yes!** As long as there isn't pizza inside (this can go in FOGO), the box can go in your recycling bin. Even if it is greasy and cheesy, the recycling process can cope.



### Do I need to rinse my bottles and jars?

**No!** Save the water. The recycling process can manage small amount of left over spreads. As long as the jar is scraped out, it's fine to be recycled.



### Can I place a bag of recycling in my recycling bin?

**No!** Recyclables must be placed in your bin loose so that the machinery can sort the items. This includes placing items in boxes or paper bags like uber eats bags - make sure it all goes in loose.



## Do you know how to FOGO?

To make the best compost, it's important that collected FOGO doesn't contain contaminants - so we need to be thoughtful about what goes into the FOGO bin. Items that can't go in FOGO include pet waste, plastics, glass, nappies, tea bags and bin liners. Even if labelled biodegradable or compostable, bags are a no-go for FOGO.

**Remember, if you can eat it or it grows, into the FOGO bin it goes!**





## Don't bin your batteries

Did you know that batteries should never go in your rubbish or waste bin? Discarded batteries can start fires. Disposing of batteries correctly keeps toxic materials out of our environment. Our Waste Recovery Centre accepts household, lithium and car batteries, while bins at Council service centres accept household batteries only.

Check [bcycle.com.au/drop-off](https://bcycle.com.au/drop-off) for local battery recycling drop off points.

**Banyule's Waste Recovery Centre** is at  
307-325 Waterdale Rd, Bellfield  
Weekdays: 7.30am – 3.30pm  
Weekends and public holidays: 7.30am – 12pm

## Towards Zero Waste – we want to hear from you

Banyule's Draft Towards Zero Waste Management Plan feedback is closing soon and we need your feedback to ensure it reflects our community's needs.

Feedback closes 5 April. Share your thoughts and suggestions by visiting [shaping.banyule.vic.gov.au/TZW](https://shaping.banyule.vic.gov.au/TZW) or scan the QR code.



## Dive into the World of Reusable Nappies!

 **Wednesday 17 April, 7.30pm to 8.30pm**

 **Online**

**Cost:** \$20


This engaging online workshop will change the way you think about nappies.

Each attendee will receive TWO premium reusable nappies valued at \$70.

Visit [banyule.vic.gov.au/Nappy](https://banyule.vic.gov.au/Nappy) to secure your spot.



## From scraps to super soil: Join our composting workshop!

 **Saturday 20 April, 10am – 11.30am  
followed by morning tea**

 **Bellfield Community Gardens,  
15 Daphne Crescent, Bellfield**

Join us for an eco-friendly, soil-enriching, workshop, that will have you transforming your kitchen scraps into gardening gold!

Register at [banyule.vic.gov.au/WhatsOn](https://banyule.vic.gov.au/WhatsOn)





Reverse vending machine at Eaglemont Tennis Club carpark, The Boulevard, Ivanhoe.

## Banyule, make your change!

Victoria's Container Deposit Scheme has arrived in Banyule. A reverse vending machine has now opened in the Eaglemont Tennis Club carpark, making it easy to turn your recycling into rewards. We encourage residents to exchange eligible drink containers for 10 cents at the reverse vending machine and over-the-counter collection points around Banyule.

As well as getting money back, you'll be helping to create a clean stream of recycling while reducing litter and waste. It's a win for the environment and for your pocket!

Learn more and find locations at [cdsvic.org.au/locations](https://cdsvic.org.au/locations)



West Ivanhoe Sports Club volunteers and players show Cr Alida McKern their recycling skills.

## West Ivanhoe Roosters' can-do approach

Local organisations like West Ivanhoe United Sports Club are making the most of the Container Deposit Scheme, reducing the amount of waste they send to landfill while making money.

The club creatively repurposed some large containers to collect cans and bottles at their Seddon Reserve clubhouse. It has a contract with a Victorian Container Deposit Scheme network operator to pick up their cans and bottles and return money to the club.

Thanks to the dedicated Roosters volunteers for being excellent role models and showing others in the community how we can all take action to reduce waste.

For other ways that community organisations can raise funds while making an impact, visit [cdsvic.org.au/fundraising](https://cdsvic.org.au/fundraising)

To find out how you can join the fun this footy season, check out [wiusc.org.au/football](https://wiusc.org.au/football)

## Skills workshops for community groups

### Grant writing essentials

Tuesday 23 April, 6pm – 8pm

Bellfield Community Hub

Hands-on workshop to learn what is required to successfully apply for grants. Step by step walk through the grant process.

### Understanding race and racism

Tuesday 30 April, 9.30am – 12.30pm

Bellfield Community Hub

Introductory workshop to develop understanding of race-related issues and improve safety and support for people of colour in your organisation.

### People of colour: Power and resilience

Tuesday 30 April, 1pm – 4pm

Bellfield Community Hub

A safe space for people of colour at your organisation to share, reflect, connect and learn.

Bookings essential. Call in at The Harmony Centre, Shop 48, The Mall, Heidelberg West or contact Hafsa Abukar, Community Partnerships Officer.

Email: [hafsa.abukar@banyule.vic.gov.au](mailto:hafsa.abukar@banyule.vic.gov.au)



# A hub for services and community life

**Bellfield Community Hub opened just over a year ago. What's happened since then?**

Since opening in October 2022, Bellfield Community Hub has hosted:

**1,500 bookings and events**

**58,000+ people through the doors**

## Reasons to visit Bellfield Community Hub at 15 Daphne Crescent, Bellfield

- Visit our Maternal and Child Health nurse
- Get your hands dirty at Bellfield Community Garden
- Borrow the latest bestseller at the click and collect library
- Charge your EV
- Have a coffee and a meal while you charge your car and read your book!
- Get help with homework with Himilo Community Connect
- Strike a pose at yoga with Olympic Neighbourhood House
- Enjoy lunch and make new friends at a social support group
- Get up to date with immunisations
- Encounter real life reptiles at our school holiday programs

## Council services at Bellfield Community Hub:

- Maternal & Child Health and immunisation
- Audrey Brooks Preschool
- Click and collect library
- Community garden
- Activity groups for older adults
- Electric vehicle chargers
- Other community groups & government services



The Hub's new click-and-collect library tempted Pat Austen to sign up for her first library card at the age of 99. Pat is a member of Council's Social Support Group that meets at the Hub. She's with Yarra Plenty Regional Library Service CEO Jane Cowell.



## No ordinary café

The café at Bellfield Hub is part of Council's long-term plan to revitalise the area. Our social enterprise partner at the Hub is For Change Co., which offers paid employment and training for young people at risk of homelessness at its café onsite.

For Change Café Bellfield is a financially self-sustaining business that has provided 19 jobs since opening in early 2023. It will provide a further 113 work and training opportunities over the next five years.

Bellfield residents win too, with barista-made coffee and a delicious vegetarian menu on their doorstep. The café also offers catering.

For Change Café Bellfield is open 8am to 3pm, Monday to Saturday.

"Half of what I achieved in this program I didn't think I was capable of. This is the first time I've stepped up to take on more responsibility. I was worried this would be another job I would lose [but] everything surpassed my expectations."

- For Change Café Bellfield trainee

# Funding the future: Council grants opening soon

**Each year Council offers a range of grants to help local community groups and individuals deliver projects that make Banyule a better place to live.**

## Arts and Culture grants

Grants of up to \$10,000 for creative projects in any medium, as well as cultural and creative events.

## Community grants

Pool of \$160,000 for activities and services provided by not-for-profit groups. Five categories:

- Community Connections
- Equipment.
- Technology Support
- Minor Capital Works
- Training and Development

## Environment grants

Grants of up to \$10,000 for projects that benefit the community and support Council's climate action, sustainable transport and environmental goals. Includes sustainable transport grants to schools and community groups for projects that promote the uptake of cycling, walking and public transport.

**Applications for Community, Environment and Arts and Culture grants are open from Monday 22 April and close Friday 31 May.**

## Sports travel grants

Grants for individuals and teams to travel to representative, state, national and international competitions. Four rounds throughout the year.

## Age Friendly grants

Up to \$1,500 from a total pool of \$15,000 in three categories:

- New and emerging seniors clubs and groups
- Seniors Festival events
- Community connection projects

Submissions open Wednesday 20 March to Wednesday 1 May. Applicants must read the guidelines and discuss their proposal with a council officer before submitting.

Your Age Friendly grants contact:

**Paula Ferronato**

Phone: **9242 3448**

Email: [paula.ferronato@banyule.vic.gov.au](mailto:paula.ferronato@banyule.vic.gov.au)

## Online information sessions

We'll take you through the guidelines, share case studies and give you tips on applying.

- **Arts & Culture grants** Monday 15 April, 6.30pm
- **Community grants** Tuesday 16 April, 6.30pm
- **Environment grants** Monday 22 April, 6.30pm
- **Grants writing workshop** Tuesday 23 April, 6pm - 8pm at Bellfield Community Hub.

Book at [banyule.vic.gov.au/grants](http://banyule.vic.gov.au/grants) or phone **9490 4222**.

## Here are some grants already making a difference in Banyule:

- St John Ambulance purchased a CPR mannikin
- Mercedeh Makoui produced a documentary film exploring mental health in our community. *Embracing Voices: Redefining Life with Schizophrenia*, was produced in partnership with Banyule Community Health, Hope Springs and Olympic Village Exodus Community.
- Riding for the Disabled Association purchased a towable manure vacuum.
- Greensborough & District Angling Club installed air conditioning.
- Diamond Valley Photographic Society purchased a studio lighting system.
- Montmorency Biodiversity Group developed workshops for adults and children.
- The Veggie Empire Inc in Greensborough installed garden irrigation equipment.



**Sustainable Macleod staged The Clean Energy Expo. Scan to watch.**



**Mother Tongue Poetry presented Women of Banyule and Beyond to celebrate International Women's Day 2023. Scan to watch.**







# Cutting emissions while we cut the grass

Banyule's Parks staff are getting acquainted with the two new electric mowers we've added to our fleet. They're looking forward to working with less noise and fumes from the new equipment. As well as being better for the environment, the zero-emission mowers are more efficient and cheaper to run than diesel-powered mowers.

The new mowers are another step towards Banyule becoming a carbon neutral organisation by 2028.

## Were you affected by the temporary closure of Para Road?

**Thanks for your patience while we conducted important works to upgrade drainage in this area.**

You may remember how rainy it was over the first part of the summer. When we found a sink hole near a leaking drainage pit off Para Road, it was important to repair the leak to stop further damage.

Thanks to the local residents who worked with us to identify the scope of the problem and the Council teams who got the job done quick smart.



**Seen something that needs Council's attention?** Let us know via our online reporting program at [banyule.vic.gov.au/ReportIt](https://banyule.vic.gov.au/ReportIt) or phone Customer Service on **9490 4222**.

# Gotta go?

**When nature calls and you're away from home, it's good to know there are 58 public toilets located around Banyule.**

We know public toilets are an important part of our community infrastructure, which is why we created a new Public Toilet Plan that outlines how we'll maintain, upgrade and build Council-owned and managed toilets over the next ten years.

Whether the toilets are in a park, at a sporting oval or around our suburbs, the plan will make sure our public toilets are well supported.

Thanks to the people who gave feedback on the plan during the consultation period. It's resulted in some additional actions, including:

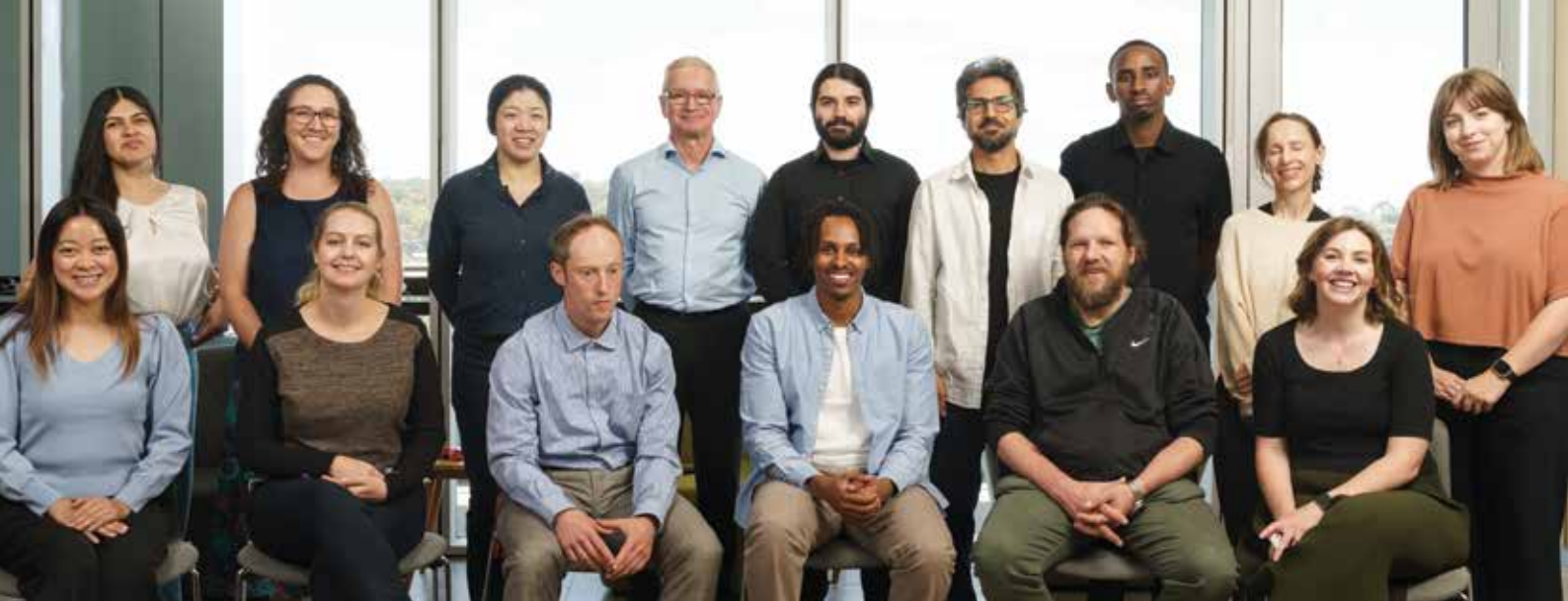
- Investigating whether to re-instate the existing public toilet block at Macleod Park before deciding on building a new toilet block in Rosanna Parkland.
- Continuing to advocate to the State Government for public toilets at the Eaglemont Railway Station.

Read the Public Toilet Plan at [shaping.banyule.vic.gov.au/publictoilets](https://shaping.banyule.vic.gov.au/publictoilets)

Find public toilet locations here: [toiletmap.gov.au](https://toiletmap.gov.au)







# Banyule helps to combat unemployment

## Council has welcomed a new group of 12 employees in its annual Inclusive Employment Program.

Now in its sixth year, the program has helped 81 Banyule residents who were facing barriers to employment.

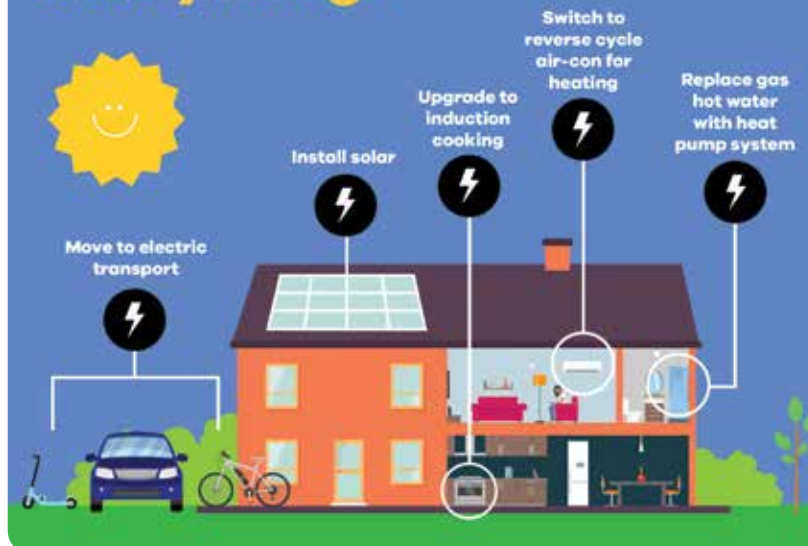
Graduates have gone on to employment or training in various industries including local government, state government, local businesses and not-for-profit organisations. Some people have gone on to further education, one person started their own business and another now runs the program!

Employees are given six months paid work at Council, with each position tailored to the person's areas of interest, goals, strengths and abilities. They are supported by individual and group coaching and development opportunities that build work skills and professional networks.

Banyule's Inclusive Employment Program was the first of its kind in local government and has been used as a model by other councils to help combat local unemployment.

Find out more at  
[banyule.vic.gov.au/InclusiveEmployment](https://banyule.vic.gov.au/InclusiveEmployment)

## The future is here. Electrify everything!



## Make the switch to Electrify Banyule

**Join the Electrify Banyule revolution for a healthy, energy efficient home and help us become a carbon neutral municipality by 2040.**

Use our simple plan to prepare so that when appliances need replacing, you're ready to make the switch. Your electrification plan can ultimately help you save up to 75% per year on energy bills. Scan the code for more information.

Need help with your plan? Contact our Community Energy Officer.

Phone: 9242 3451

Email: [energy.info@banyule.vic.gov.au](mailto:energy.info@banyule.vic.gov.au)



# Have an Active April

Why not try something new this April? There are plenty of opportunities with our Active April program of fun activities for all ages at locations around Banyule.



Unless specified, events are free and bookings are not required.

**B** = Booking required **\$** = cost

MON	TUE	WED	THU	FRI
<b>1</b>	<b>2</b> Jets Youth Dance Party Greenhills Neighbourhood House 6pm – 8pm	<b>3</b> Walking Football Greensborough Walk, Greensborough 11am – 1pm	<b>4</b> Walk to Poulter Reserve from WaterMarc. Meet at WaterMarc 1pm – 1.30pm	<b>5</b> <b>\$</b> Youth Slide night WaterMarc 6pm – 9pm
<b>8</b> Ivanhoe Seniors Exercise in Ivanhoe Park, Lower Heidelberg Rd & Wamba Rd, Ivanhoe East 10am – 11am	<b>9</b> Pickleball on Greensborough Walk, Greensborough 10am – 12pm	<b>10</b> Kids games on Greensborough Walk, Greensborough 12pm – 2pm	<b>11</b> Youth Traditional Aboriginal Games Barrbunin Beek Aboriginal Gathering Place, Catalina St, Heidelberg West 11am – 12.30pm	<b>12</b> <b>B</b> Belly Dancing Greensborough Walk, Greensborough 11.30am
<b>15</b> Ivanhoe Seniors Exercise in Ivanhoe Park, Lower Heidelberg Rd & Wamba Rd, Ivanhoe East 10am – 11am	<b>16</b> <b>B</b> <b>\$</b> Youth All Abilities Dance Watermarc, Flintoff Street, Greensborough 4pm	<b>17</b> <b>B</b> <b>\$</b> Bike maintenance Greensborough Walk, Greensborough 6.15pm – 8.45pm	<b>18</b> Walk to Poulter Reserve from WaterMarc. Meet at WaterMarc 1pm – 1.30pm	<b>19</b> Ivanhoe Seniors Exercise in Ivanhoe Park, Lower Heidelberg Rd & Wamba Rd, Ivanhoe East 10am – 11am
<b>22</b> Wayapa Wuurrk, Earth Mindfulness Barrbunin Beek Aboriginal Gathering Place 4pm – 4.45pm	<b>23</b> <b>B</b> Older Adults Walk-a-thon Greensborough 9.30am – 1pm	<b>24</b> Kids games Greensborough Walk, Greensborough 2.30pm – 4pm	<b>25</b>	<b>26</b> Ivanhoe Seniors Exercise in Ivanhoe Park, Lower Heidelberg Rd & Wamba Rd, Ivanhoe East 10am – 11am
<b>29</b> Ivanhoe Seniors Exercise in Ivanhoe Park, Lower Heidelberg Rd & Wamba Rd, Ivanhoe East 10am – 11am	<b>30</b> <b>B</b> <b>\$</b> Youth All Abilities Dance Watermarc, Flintoff Street, Greensborough 4pm	Scan the code to find more events or head online to <a href="https://banyule.vic.gov.au/ActiveApril">banyule.vic.gov.au/ActiveApril</a>		



## Making strides for fun and health

The Older Adults Walk-a-thon is back bigger and better for 2024. Take a short stroll or a long march and enjoy raffles, tai chi, seniors Zumba and walking soccer.

View the program at  
[banyule.vic.gov.au/walkathon](https://banyule.vic.gov.au/walkathon)

**Tuesday 23 April, 9.30am – 1pm**

**Willinda Park Athletics Track  
1 Beatrix Street, Greensborough**

Free event, bookings essential. Phone  
 Customer Service on **9490 4222** or book  
 online at [trybooking.com/CNYVP](https://trybooking.com/CNYVP)







## Life and death decisions for teens in Binnak Park

A group of teenagers do something bad, really bad, to one of their peers, then try to cover it up. As their lies spiral out of control, the consequences will shatter the group forever.

Binnak Park in Bundoora is the setting for DNA, a dark contemporary drama examining human nature, responsibility and morality to hilarious and terrifying effect. This entirely youth-led production is the first project of new company Mucky Puppy Theatre.

Director Lakshmi Ganapathy, pictured in Binnak Park, cast a wide net with posters around Banyule and a call out through social media to assemble her young cast, some of them first-time performers.


A graduate of creative arts at La Trobe University, Ms Ganapathy developed a passion for theatre when working on annual musicals at Viewbank College. She founded Mucky Puppy in response to the lack of local theatre projects for youth and early-career artists.

“Opportunities are dwindling for young people to get involved in theatre and I wanted to do something in the local community,” she said.

DNA is supported by a Banyule Arts and Culture grant.

### DNA by Dennis Kelly

A Mucky Puppy Theatre production directed by Lakshmi Ganapathy and produced by Brigid Charis.

 **12 – 21 April at sunset**


 **Binnak Park, Anderson Parade, Watsonia**

Book tickets:  
[banyule.vic.gov.au/youththeatre](http://banyule.vic.gov.au/youththeatre)



*Presented by On The Road Again*

### Chitra and Alice Skye

 **Friday 19 April, 6.30pm – 9pm**

 **Yarra-me Djila Theatrette**

Live contemporary music on our indoor/outdoor stage. Part of On the Road Again, a Victorian Government initiative delivered by Music Victoria to support the return of live music events across the state.

**ON THE ROAD AGAIN**



# Chillin' in Banyule

## No need to travel far to see live music this autumn!

Chillin' in Banyule is back in April with a fantastic line-up of gigs in local cafés, restaurants and Banyule venues such as Ivanhoe Library and Cultural Hub. It's easy for you to enjoy and support our local performers and venues. Events are free to attend, refreshments can be purchased from hosting venues. **The series runs on Thursdays to Sundays from 4 – 28 April.**



Check out the gigs close to you at  
[Banyule.vic.gov.au/Chillin](https://Banyule.vic.gov.au/Chillin)



### Spotlight on Mel Taylor Trio

The Mel Taylor Trio kicks off Chillin in Banyule on 4 April. Mel Taylor's compelling voice and dark country undertones have seen her shortlisted in the Australian Folk Music Awards and with a debut album in the works. The songwriter

performs with Isaac Gunnoo on bass (The Maes) and Maddison Carter on drums (The Bean Project). Recent performances include a sold-out show at Wesley Anne in Northcote and featured artist show at the National Gallery of Victoria.

**Thursday 4 April, 6pm – 8pm**

**Empire Music Studios  
9 Northern Road,  
Heidelberg West**

Free event. Bookings essential at  
[trybooking.com/1183872](https://trybooking.com/1183872)



## Urban Lightbox exhibitions

Take a stroll through Banyule's Urban Light Box exhibitions in Heidelberg West laneways. The rotating exhibitions showcase talent from new and established artists. Young Banyule residents created the works currently on display in partnership with Banyule Community Health and local artist UB. Open all day, every day.

### Where:

- Cambridge Arcade, Bell St Mall
- Midway Lane, Olympic Village Shopping Centre

Check out [banyule.vic.gov.au/PublicArt](https://banyule.vic.gov.au/PublicArt) for more details.



# Ivanhoe Library & Cultural Hub

## Events & activities

📍 275 Upper Heidelberg Road, Ivanhoe VIC 3079

All events at Ivanhoe Library and Cultural Hub are free. Please check the website for opening hours of each exhibition or contact us if you have any questions.

🌐 [banyule.vic.gov.au/ILCH](http://banyule.vic.gov.au/ILCH)

✉ [arts@banyule.vic.gov.au](mailto:arts@banyule.vic.gov.au)

☎ 9490 4222



### Two Conversations on The Birrarung By Phillip HOWe and Anthony Williams

📅 6 April – 19 May

Opening: Friday 5 April, 6.30pm – 8pm

📍 Art Gallery 275

An exploration of the iconic Birrarung (Yarra River) drawing inspiration from historical depictions. Traditional, contemporary and multi-disciplinary media elements that contemplate the river's beauty, environmental significance and cultural heritage.

*Image: L – R, detail of River Currents by Anthony Williams and detail of Birrarung River Trail by Phillip HOWe.*



### Mass, Drawing Intensive By Felicity Gordon

📅 20 April – 12 May

Opening: Tuesday 23 April, 6.30pm – 8pm

📍 Loft 275

Raw and uncensored works by eight artists during a three-day drawing intensive at ILCH. Inspired by a similar program at New York Studio School. Proudly supported by a Banyule Council Arts & Culture Project Grant.

*Image: Live Drawing in studio by Felicity Gordon.*

### Artists-in-Residence: 17 April – 12 May

Visit and chat with the artists about their artistic processes as part of the Intensive Program.



### Together Celebrating our diverse cultures

📅 21 March – 14 April

📍 Loft 275

Banyule residents claim ancestry from 125 countries and 80 languages are spoken, while 24.5% of us were born overseas. This exhibition marks Harmony Day, the International Day of Eliminating Racial Discrimination, by celebrating different cultural observances in our diverse community.



### Call for Entries

*We are* is an exhibition celebrating people who identify as LGBTQIA+. It will be held in Loft 275 to celebrate the International Day Against Homophobia, Biphobia and Transphobia, which occurs on 17 May each year.

This is an open call for entries from all LGBTQIA+ people to submit a self-portrait in a variety of forms and mediums. This is not limited to artists. This is not an exhibition of art by LGBTQIA+ people, it is an exhibition of LGBTQIA+ people. Find out more at [banyule.vic.gov.au/WeAre](http://banyule.vic.gov.au/WeAre)

Entries open until 19 April.

# Ward Rounds

Banyule is made up of nine wards. To find out which ward you belong to scan the code



**Cr Peter Castaldo**  
Griffin Ward

[peter.castaldo@banyule.vic.gov.au](mailto:peter.castaldo@banyule.vic.gov.au)  
0466 502 698

Council is all about making the most of our fantastic community assets, so when regulars at Ivanhoe Seniors Exercise Park were looking for a place to meet after their exercise sessions, we approached Ivanhoe Park Croquet Club to see if its nearby clubroom was available. The two groups worked together to find a simple and economical solution that results

in better use of community assets and more community connections. And the croquet club scored a few new members into the bargain!

Join Council's volunteer instructors at the exercise park near the corner of Lower Heidelberg and Wamba roads from 10am – 11am every Monday and Friday (except public holidays). Read more in our story on page 7.



**Cr Alison Champion**  
Sherbourne Ward

[alison.champion@banyule.vic.gov.au](mailto:alison.champion@banyule.vic.gov.au)  
0466 486 593

It's wonderful to see the new playground at Montmorency Park nearing completion. It's being updated as part of Council's ongoing playground replacement program. Thank you to the Rotary Club of Nunawading for recycling the previous equipment. The club will ship it to a community in Sri Lanka and Rotary members will install a new playground

for the enjoyment of a families there. I was delighted to met with VCE students at Montmorency Secondary College recently. We talked about Council's Workplace Pathways Program which offers work placements, internships, and graduate roles. Find out more at [banyule.vic.gov.au/careers](http://banyule.vic.gov.au/careers)



**Cr Fiona Mitsinikos**  
Hawdon Ward

[fiona.mitsinikos@banyule.vic.gov.au](mailto:fiona.mitsinikos@banyule.vic.gov.au)  
0434 891 077

I was pleased to visit Yallambie Tennis Club to meet club president Iain Hebden, pictured. Iain showed me around the club and we talked through ideas that he and the committee have to improve the space. They want to make it more accessible and create some multipurpose areas. It's great to meet our volunteers who put so much time into running

local sporting clubs that benefit the whole Banyule community.

Check out the story on page 7 for more information about volunteering in Banyule.

Volunteering can be very rewarding if you have the capacity and would like to be more involved with your community.





# Ward Rounds



**Cr Elizabeth Nealy**  
Beale Ward

[elizabeth.nealy@banyule.vic.gov.au](mailto:elizabeth.nealy@banyule.vic.gov.au)  
0435 243 598

Council has free graffiti removal kits to help you get rid of graffiti – fast! The kits are available to residents, businesses and community groups and can be collected from Council customer service centres in Greensborough and Ivanhoe, phone **9490 4222**.

We recommend removing graffiti as soon as possible – it is easier to

remove when new and discourages further vandalism.

Council's Graffiti Strategy involves graffiti removal and discouraging it through the use of street art and murals. Council can remove graffiti on Council property and on electricity poles and Australia Post mail boxes.

Report graffiti on Council property at [banyule.vic.gov.au/ReportIt](https://banyule.vic.gov.au/ReportIt)



**Cr Mark Di Pasquale**  
Bakewell Ward

[mark.dipasquale@banyule.vic.gov.au](mailto:mark.dipasquale@banyule.vic.gov.au)  
0481 002 299

It was great to meet Natalie and Michael from Schumi Haircutters in Morwell Avenue, Watsonia when I checked out recent progress on the Watsonia Town Square build.

Local businesses like Schumi remain open during the Town Square construction. I encourage you to keep supporting our valued local traders.

There's parking available around the shopping village, with a temporary car park on Morwell Avenue up on the top side of High Street.

And a reminder that an important tradition continues in Watsonia - the Anzac Day dawn service at the Morwell Avenue Memorial outside the RSL. Turn to page 23 for details of local Anzac Day services.



**Cr Alida McKern**  
Chelsworth Ward

[alida.mckern@banyule.vic.gov.au](mailto:alida.mckern@banyule.vic.gov.au)  
0435 316 318

A group of senior women golfers are bringing a lot of energy to Ivanhoe Public Golf Course when they meet for their regular Thursday game. The group is a great example of how exercise, social connectedness and ageing well go hand in hand. Ivanhoe Ladies Golf Club has nine octogenarian golfers (one is 88 years old) and another three will

soon join their number. One of the golfers has been a member at Ivanhoe for 37 years!

It was good to visit and see the members enjoying the fresh results of Council's recent club house renovations.

Ivanhoe Ladies Golf Club welcomes new members of any age. Head to [ivanhoelgc.com.au](https://ivanhoelgc.com.au) for details.



**Banyule is made up of nine wards. To find out which ward you belong to scan the code**



**Cr Peter Dimarelos**  
Olympia Ward

[peter.dimarelos@banyule.vic.gov.au](mailto:peter.dimarelos@banyule.vic.gov.au)  
0434 891 065

Have you seen something Council should know about when you were out and about in Banyule?

It could be some graffiti, dumped rubbish, an abandoned car or even a cracked footpath.

Council's Report it system makes it easy to report issues on your mobile phone.

It only takes a few minutes to visit [banyule.vic.gov.au/ReportIt](https://banyule.vic.gov.au/ReportIt) and follow the prompts to send a photo of the problem. The earlier we hear about it, the earlier we can fix it.

Don't have a smart phone? You can always call Council on **9490 4222**.



**Cr Rick Garotti**  
Grimshaw Ward

[rick.garotti@banyule.vic.gov.au](mailto:rick.garotti@banyule.vic.gov.au)  
0402 846 845

Young families and new babies are an important part of the Bundoora community. We have seen a recent increase in Maternal and Child Health (MCH) enrolments and higher births. Council provides a free MCH service for all families with children from birth to school age.

I enjoyed visiting one of those services, a supported playgroup

at Bundoora MCH centre for new parents feeling isolated. It's one of six such playgroups across the municipality. Members change as they make new friendships and new parents join.

If you are new to the area and have children between birth and school age, find out about local MCH services at [banyule.vic.gov.au/MCH](https://banyule.vic.gov.au/MCH)



**Cr Tom Melican**  
Ibbott Ward

[tom.melican@banyule.vic.gov.au](mailto:tom.melican@banyule.vic.gov.au)  
0413 043 015

We are finally ready to start building the new Rosanna Library! It will have a youth and teen zones, recording studios, meeting rooms and an outdoor terrace. Maternal and Child Health services and Banyule Toy Library will be on the ground floor. Construction should be complete by the end of next year. While Council builds the new pavilion at Macleod Park, Macleod Junior

Football Club will play at De Winton Park on Sundays from 14 April. The oval is fresh from a \$1 million upgrade, a joint project of Council and the Victorian Government, and it's the first time juniors have played there since 1985! Macleod JFC's Auskick program is held there starting in May. Find out more at [macleodjfc.com.au](https://macleodjfc.com.au) or phone Richard on **0425 814 105**.







### The Letter by Hikaru Kodama

One of the Homefront series of sculptures in Greensborough War Memorial Park, *The Letter* is a tribute to those left behind when partners, family members and friends go to war.

The letter could contain devastating news, a declaration of love or the date of homecoming.

The heart-shaped hole in the figure represents feelings of loss and emptiness and the pain of separation.

# Lest we forget

## Anzac Day services in Banyule

### Sunday 21 April

#### Watsonia RSL Service

🕒 10.30am

📍 Cherry Street Memorial,  
Cherry Street, Macleod

### Wednesday 24 April

#### Macleod College service & morning tea

🕒 10.15am

📍 NETS Stadium,  
2 Somers Ave, Macleod

#### Repatriation Hospital Service

🕒 10.30am

📍 Remembrance Garden,  
Heidelberg Repatriation  
Hospital, 300 Waterdale  
Road, Heidelberg

### Thursday 25 April

#### Watsonia RSL dawn service

🕒 6am

📍 Morwell Avenue Memorial,  
Morwell Avenue, Watsonia

#### Greensborough RSL dawn service

🕒 6am

📍 Greensborough War  
Memorial Park, 203 Henry  
Street, Greensborough

#### Montmorency-Eltham RSL dawn service

🕒 6am

📍 Eltham Cenotaph,  
903 Main Road, Eltham

#### RSL on Bell service then refreshments at Heidelberg Football Club

🕒 7am

📍 Corner Burgundy & Studley roads,  
Heidelberg

#### Greensborough Anzac Day march

🕒 8.30am

📍 March from Poulter Avenue  
opposite Greensborough  
RSL to Greensborough  
War Memorial Park

#### Watsonia RSL traditional service

🕒 10.20am

📍 Morwell Avenue Memorial,  
Morwell Avenue, Watsonia

#### Montmorency-Eltham RSL family service

🕒 10.30am

📍 Petrie Park, Ripper Street,  
Montmorency

#### Heidelberg RSL service followed by light refreshments

🕒 11am

📍 Heidelberg West RSL, 180  
Bell Street, Heidelberg



# Join our 'ThinkTank' and help shape Banyule's future

We're looking for 50 locals to join the Banyule ThinkTank. Share your knowledge, insights and ideas for our community's future. Meet like-minded locals who want to make a difference. Get rewarded for giving your time and wisdom.



**Everyone is welcome to apply**

Express interest at  
[shaping.banyule.vic.gov.au](https://shaping.banyule.vic.gov.au)

## Contact us

### All enquiries

PO Box 94, Greensborough, VIC 3088  
Phone 9490 4222  
[enquiries@banyule.vic.gov.au](mailto:enquiries@banyule.vic.gov.au)  
[banyule.vic.gov.au](https://banyule.vic.gov.au)

### Council Service Centres

**Greensborough** 1 Flintoff St  
**Ivanhoe** 275 Upper Heidelberg Rd  
**Rosanna** 72 Turnham Ave (currently closed)  
COVID-19 restrictions may impact operations so please check our website for up-to-date information. Our customer service staff can also assist you over the phone.

### Hearing or speech impaired

Call us through the National Relay Service on 133 677 (TTY) or 1300 555 727 (ordinary handset) and contact 9490 4222.

## Interpreter service

إذا كنتم بحاجة إلى مترجم يرجى الاتصال  
بالخط القومي للترجمة الهاتفية على الرقم  
131 450 وطلب إصالحكم ببلدية بانيول على  
الرقم 9490 4222.

如果你需要一名翻译, 请打电话到国家电话翻译服务处 (TIS National) 131 450, 再转接到 Banyule 市政府 9490 4222

若你需要口譯員, 請致電 131 450 聯絡 TIS National, 要求他們為你致電 9490 4222 接通 Banyule 市政廳。

Ako vam je potreban tumač, molimo vas, nazovite TIS National na broj 131 450 i zatražite da vas se spoji sa Vijećim općine Banyule na broj 9490 4222.

Se hai bisogno di un interprete chiama TIS National al numero 131 450 e chiedi di essere messo in comunicazione con il Comune di Bayule al numero 9490 4222.

Αν χρειάζεστε διερμηνέα τηλεφωνήστε στην Εθνική Υπηρεσία Διερμηνέων Μεταφραστών στον αριθμό 131 450 και ζητήστε να σας συνδέσουν με τη Δημαρχία Banyule στο 9490 4222.

Ако ви треба преведувач ве молиме јавете се на TIS NATIONAL на 131 450 и замовете да ве поврзат со Banyule Council на 9490 4222.

Haddii aad u baahan tahay mutarjum wac khadka qaranka oo ah TIS 131 450 weydiina in lagugu xiro Degmada Banyule tel: 9490 4222.

Nếu cần thông dịch, xin gọi cho TIS Toàn Quốc qua số 131 450 rồi nhờ họ gọi cho Hội Đồng Thành Phố Banyule theo số 9490 4222 giúp quý vị.