

Banyule Banner

January 2026

4	Budget consultation
8	Banyule libraries voted among the best
17	Twilight Sounds



Mayor's Message

Mayor
Cr Alison Champion



Free family summer fun

Council's season of free community events continues, with Twilight Sounds at Heidelberg Park on Saturday 14 February. Read on for details of this event and other activities through summer and autumn. The calendar of activities is constantly updated in the What's On pages on Council's website.

Rosanna Library opening soon!

The new library and Maternal and Child Health clinic will open on Wednesday 21 January.

It will be my privilege to officiate at the formal opening in February, capping off years of work by previous Mayors, Councillors and Council officers.

Thinking creatively and using entrepreneurial skill, Council was able to deliver a new library years ahead of schedule and at a lower

cost to ratepayers through a partnership with Woolworths. With the new library and supermarket and all the other shopping and recreation attractions within easy walking distance of the train station and beautiful parklands, Rosanna village continues to be a thriving hub of commerce and civic life.

Thank you to the Yarra Plenty Regional Library service staff who have worked to get it ready for opening. It's easy to see why YPRL was voted one of the best library services in Victoria (story on **page 8**).

Help shape Banyule's budget

Planning for Banyule's 2026/27 Budget is well advanced, but there is still time to share your thoughts on the draft projects and initiatives planned and proposed changes to how Council raises funds for services. Community consultation

closes on 6 February. All the details are at Shaping Banyule, the place to have your say on local projects. (story on **page 4**).

Everyday acts of kindness

The heinous crimes committed at Bondi in December have opened fractures in the social fabric of our nation. There have also been inspiring acts of bravery, sacrifice and connection.

Amid the sadness and fear, I am humbled and heartened by the generous community spirit I encounter in Banyule.

I am grateful for this gift of community and the kindness I witness and receive every day. With every small act of kindness our community is built anew, making us all stronger. Thank you for continuing to look after each other through these difficult times.

Stay in touch with us online


 Email newsletters
banyule.vic.gov.au/subscribe

 
[@BanyuleCouncil](https://www.facebook.com/BanyuleCouncil)

Have your say on important projects and local initiatives

 shaping.banyule.vic.gov.au

Council Meetings

 Upcoming dates:
9 February
2 March

 From 7pm

 Council Chambers @ Ivanhoe Library and Cultural Hub,
275 Upper Heidelberg Road,
Ivanhoe

For agendas, minutes, public question time and request to speak forms, visit banyule.vic.gov.au/CouncilMeetings

Banyule City Council is proud to acknowledge the Wurundjeri Woi-wurrung people as Traditional Custodians of the land and we pay respect to all Aboriginal and Torres Strait Islander Elders, past, present and emerging, who have resided in the area and have been an integral part of the region's history.

Our community is made up of diverse cultures, beliefs, abilities, bodies, sexualities, ages and genders. Council is committed to access, equity, participation and rights for everyone; principles which empower, foster harmony and increase the wellbeing of an inclusive community.

COVER: Make your own crafty plants at Eco Festival. Details on page 14.



Keeping our community healthy: your local immunisation services

Protecting your family has never been more convenient

Council offers 10 immunisation sessions every month at locations right across Banyule, making it easy to keep your family's vaccinations up to date.

Free vaccines through the National Immunisation Program

All NIP vaccines are available at no cost for children and young people, from infancy through to adolescence. We've got your family covered. All you need is a family Medicare card.

Extra protection: meningococcal B vaccine

We also offer the meningococcal B vaccine for optional protection.

While meningococcal disease is rare, it's serious and can strike quickly. Young children, adolescents and young adults are particularly vulnerable.

The meningococcal vaccine is not funded through the NIP. It costs \$155 per dose and requires up to three doses to be effective, depending on the age of the child. It is offered for children from six-weeks old and is available at all Council immunisation sessions.

Book your immunisation session

Reserve your spot online for any of our community sessions or contact our friendly team with questions.

Let's work together to keep Banyule healthy for everyone.

📞 9457 9964

✉ immunisation@banyule.vic.gov.au

🌐 banyule.vic.gov.au/immunisation



Register for kindergarten

Registrations for kinder attendance in 2027 open on Monday 2 March.

Register your child for 3-year old or 4-year-old kinder at one of our 26 stand-alone kindergartens. It's easy and free to register online.

All children in Victoria can attend free kindergarten through sessional services or long day care (with reduced fees for eligible families).

Eligibility and starting age

- 3-year-old kindergarten: Child must turn three by 30 April of the attending year. They may start after their third birthday even if the term has begun.
- 4-year-old kindergarten: Child must turn four by 30 April of the attending year. They may start after their birthday, even if the term has begun.

Register at banyule.vic.gov.au/kindergartens

Kindergarten Open Day

Saturday 28 February, 9am – 12pm

Come and explore any of the **26 community kindergartens in Banyule**. Families with young children are invited to visit and learn more about:

- The lifelong benefits for children who attend kindergarten.
- Facilities and programs at each service.
- How to register for kindergarten in Banyule.

Teachers and staff will be available to chat and answer questions.

To find your local kindergarten service visit banyule.vic.gov.au/kindergartens

Shaping Banyule

Get involved in local projects



Building Banyule's budget: have your say

We're planning Banyule's budget for next year and want to hear from you!

The budget is how Council decides where money goes for things like parks, sports, roads, and community projects.

Check out the proposed projects and changes for how Council raises money for services and tell us what you think.

Your feedback matters – it helps us make decisions that work for everyone in Banyule.

Your Council contacts:

Gloria Conte, Chief Financial Officer

Phone: 9098 8020

Email: gloria.conte@banyule.vic.gov.au

Mohammad Rashid, Asset Management Coordinator

Phone: 9433 7730

Email: mohammad.rashid@banyule.vic.gov.au

Complete the online feedback form by 6 February at
shaping.banyule.vic.gov.au/buildingthebudget



Building a better Banyule



Rosanna Library opening!

Rosanna Library will open to the public on Wednesday 21 January, ahead of an official ceremony in February.

As the Banner went to print, library staff were installing the collections and facilities. We'll share more in the next edition, out in March, but why not see for yourself? The new library in Turnham Street, opposite Rosanna Station, is twice the size of the former library and the building also has Maternal and Child Health services and Banyule Toy Library.

We thank the Victorian Government for its contribution of \$1.5 million through the Living Libraries program.



Watsonia Town Square

Locals and visitors are enjoying Watsonia Town Square over summer – it's a great place to meet up with friends or stop for a break when you're shopping or visiting the library. The final piece of this transformational project is the new toilet block, set to open soon. When power is connected to the new building, we'll switch on the big orange Yalp Sona interactive dance and play arch to complete the play area near the library.



Gym improvements at Olympic Leisure Centre

Works are starting on the gym at Olympic Leisure Centre, delivering more space, modern equipment and improved facilities for the Heidelberg West community. The gym upgrade is part of broader plans to renew the centre, which include a new library with books and digital resources and space for study, events and story time.

Council is investing \$1.8 million in Olympic Leisure Centre and we're excited to have received a further \$200,000 from the Victorian Government's Living Libraries Infrastructure Program to help deliver the library. Works on the gym are expected to be completed by April. Stay up to date at shaping.banyule.vic.gov.au/OLC

The Centre Ivanhoe portico

The portico of The Centre Ivanhoe is being replaced. Heritage Victoria has required the removal of the existing portico as part of the Ivanhoe Library and Cultural Hub building works.

The current portico obstructs the facade of this significant heritage building. We have worked with a heritage architect and Heritage Victoria to develop a solution. Heritage Victoria has approved a slim-line portico that will provide a functional entry without detracting from the façade.

This change reflects our commitment to preserving the heritage value of Heidelberg Town Hall while ensuring it remains accessible and welcoming.



Advocacy win for Macleod

We're pleased that works to remove the level crossing at Ruthven Street in Macleod includes a new walking and cycling path along Ellesmere Parade, completing the missing link between Rosanna and Macleod.

This has been a long-standing advocacy goal for Council and we're excited to see it included in the plans released by the Victorian Government.

We've also campaigned for a signalised crossing at Ruthven Street to ensure the safety of walkers and bike riders and this too looks set to be included in the plans.

Macleod Park will be used for equipment, machinery, vehicles and construction materials during the crossing removal works, which will begin late this year. Macleod Junior Football Club will enjoy the coming season in the new pavilion and Council is working closely with the Victorian Government, the football club and Macleod Cricket Club to find alternate grounds.

The Victorian Government will resurface Macleod Park once the crossing removal works are finished, in mid-2027.

You can see the plans and get more information at bigbuild.vic.gov.au



Making transport work for everyone

We're continuing to advocate for better access to trains and stations on the Hurstbridge line so everyone can use public transport easily and safely.

Community feedback shows what helps. Tactile ground surface indicators – the raised circles on footpaths and train platforms – help people with mobility and vision disabilities navigate public spaces safely. Hearing loops provide service and navigation information for people with hearing loss.

We also know what makes travel harder for many people. The old wooden bridge and stairs at Ivanhoe Station and the steep ramps at Watsonia Station are unusable and unsafe for many people in our community.

We made a video with members of Banyule's Connected Communities advisory committee, including Emma Jago, pictured. They shared their experience of train travel from the perspectives of older people and people with visual impairment, hearing impairment, physical disability and hidden disability.

The new station at Montmorency is an example of how a train station should work. We'll keep pushing for every station to match the accessibility at Montmorency.

Scan the code to watch the video.





Banyule Mayor Cr Alison Champion with members of Watsonia Men's Group.

Grants for a stronger community

Congratulations to the recipients of Banyule's grants program, who were recognised at our annual presentation night celebrating projects that will make a real difference in our community.

We're proud to support local groups, individuals and businesses through our grants program, helping them bring ideas to life that make Banyule an even better place.

Grants were awarded across three categories:

- 27 community grants
- 15 environment grants
- 6 arts and culture grants

To see the full list of grants awarded, visit banyule.vic.gov.au/GrantRecipients

Watsonia Men's Group

The community grant received by the Men's Group at Watsonia Neighbourhood House will help their program, which was set up to give men a safe place to connect, share stories and support one another.

Mayor Cr Alison Champion dropped by to spend time with group facilitator Shannon and members of the group. Shannon said, "Men often don't have many chances to socialise so this group gives them a space where they feel supported. A few come along unsure of what to expect but soon enough they return because they want to."

Learn more about the program at watsonianh.org.au

Diamond Valley Community Support

Thanks to their Community Grant, Diamond Valley Community Support (DVCS) will be able to replace six outdated computers, ensuring volunteers have access to modern technology.

Nadia Chevriaud from DVCS shared what inspired them to apply: "Windows 10 is no longer supported, so all our computers needed to be upgraded. Six of our devices simply couldn't handle Windows 11 and needed replacing."

This upgrade will make a big difference for DVCS and the community.

"Our volunteers will be able to continue providing support to clients – accessing and maintaining records, making referrals, creating rosters and promotional material. Plus, having access to the latest technology will help them in other areas of life, like job searching and staying socially connected," Nadia added.

"Receiving the grant means DVCS can keep its emergency relief funds focused where they're needed most. The cost of these computers equates to 1,400 bags of non-perishable food items for people in need. Thanks to this grant, we don't have to divert those funds."

We're thrilled to see projects like this and Watsonia Men's Group creating real impact in Banyule.

Find out more about Banyule's grants programs at banyule.vic.gov.au/grants



Banyule libraries top customer poll

Banyule's libraries have been voted among Victoria's best in a survey of library users.

The survey by Public Libraries Victoria confirmed what locals already knew: Yarra Plenty Library Service (YPRL) is one of the top-performing library services.

YPRL, which runs Banyule's libraries and our mobile library service, ranked first in customer satisfaction (9.4 out of 10). It also placed top for active membership and investment in collections and was ranked second for programs for children.

These results reflect strong community involvement. YPRL libraries recorded 1.4 million visits in 2024/25 and had the highest attendance at library programs and events, with 143,000 participants over the year.

And the future looks even brighter, with new libraries opening in Rosanna and Heidelberg West, making it easier than ever to enjoy everything YPRL offers.

Library membership is free, and with exciting new services arriving, now is the perfect time to sign up.

As a member, you will enjoy:

- Access to thousands of books and digital resources.
- Tech help and study spaces.
- Children's programs and free community events.

Join today

Sign up online at yprl.vic.gov.au or visit your local library and talk with one of our friendly librarians.

Membership is open to everyone who lives, works or studies in Banyule.



Nominations open for 2026 Banyule Volunteer Awards

Do you know an outstanding volunteer?

Here's your opportunity to celebrate the incredible volunteers who make Banyule a great place to live, work and play – nominate them for a Banyule Volunteer Award. The awards honour outstanding people and groups whose dedication enriches our community.

Individuals and groups nominated for Awards will be invited to the Banyule Volunteer Celebration on 20 May at The Centre Ivanhoe.

This year's categories are:

- Young volunteer (aged 12 – 25)
- Group or community initiative
- Individual volunteer
- Lifetime contribution

How to nominate someone

Nominations open on Monday 19 January and close on Sunday 15 March.

Make your nomination at banyule.vic.gov.au/VolunteerAwards

For more information, or if you need assistance to nominate online, call Karen Molinaro on **9457 9955** or email volawards@banyule.vic.gov.au

Test your waste and recycling knowledge!



Across

1. What is the bin for things that can't be reused or recycled?
3. What can you do at home to recycle food scraps?
6. Recycling is good, what is another R action you can take to avoid making waste in the first place?
8. Taking something old and making something new. Hint: also the name of the yellow-lidded bin.
9. What is one of the metals we can recycle through our recycling bins?
10. You might rake me up and put me in your FOGO bin.
12. What is paper originally made from?
13. Where does your red bin go after the truck picks it up?
17. Both your recycling and FOGO waste should be placed in the bin ____.
18. The bit of steak you don't eat that can go in your FOGO bin.
19. When the wrong thing is put in the wrong bin.

Down

2. They should never go in any of your bins.
4. Outer coverings of fruit and veggies, perfect for the FOGO bin.
5. Waste left on the ground.
7. Glass is infinitely recyclable. What is it originally made from?
11. We care about what happens to waste because we care about this.
14. What do the O's stand for in FOGO?
15. Rubbish down the drain can end up here.
16. Fill in the missing word: "If you can eat it or it grows, into your ___ bin it goes." Hint: this bin has a lime green lid.

See page 18 for answers

Get active to school in 2026

Register your school now for Council's Active to School program.

Active to School encourages students to use any physically active mode of transport – walking, running, scooting, riding a bike – to get to school.

The program promotes fitness, reduces traffic congestion, makes school streets safer and promotes physical and mental wellbeing.

Council's transport team works with your school to design a program of fun activities focused on sustainable transport.

Check Council's website for more information or email the Transport Planning Team at activetravel@banyule.vic.gov.au



Hockeyroo Olympian to speak at Women in Sport event

Our popular Women in Sport event is back for 2026, with dual-Olympian Rachael Lynch as guest speaker.

Retired Hockeyroo goalkeeper, Registered Nurse and mental health ambassador, Rachael was awarded the Medal of the Order of Australia in 2024 for her service to hockey and was listed on the COVID-19 Honour Roll for her work during the pandemic.

Women In Sport

 Wednesday 25 March, 6pm – 9pm

Guest speaker: Rachael Lynch AOM OLY

Check the What's On page on Council's website for venue and bookings.

Fitting memorial to those who have served

A new war memorial in Greensborough will have more space for ceremonial events and will be placed next to a series of commemorative sculptures.

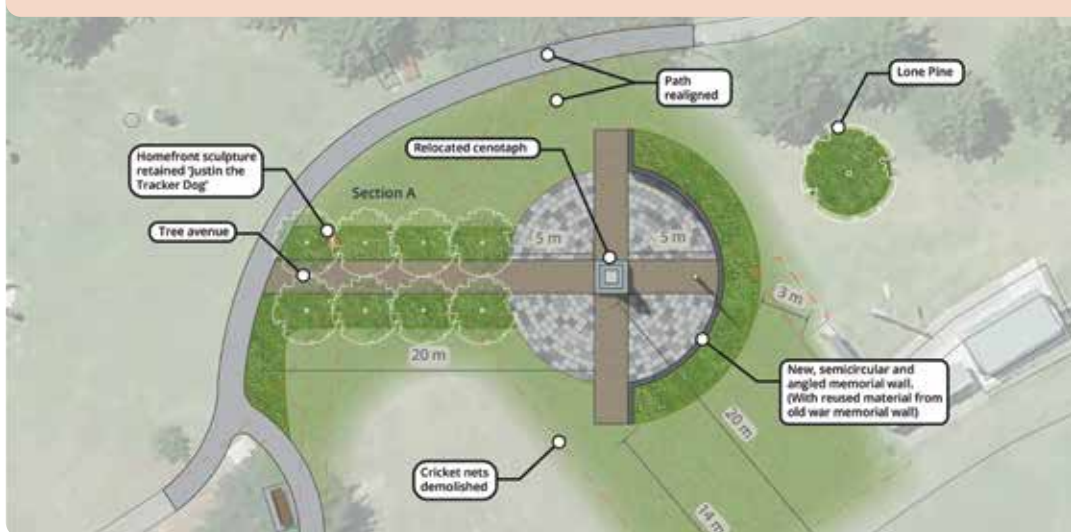
The new space was designed with Greensborough RSL as a more fitting memorial to all who have served in the Defence Forces. It will be ready for Anzac Day services.

We're relocating the cenotaph and building a new memorial in the west of Greensborough War Memorial Park, close to the Homefront artworks, a series of wooden sculptures that tell the stories of war veterans and their families.

The new war memorial will have a low wall, gardens and paving, allowing views across the park and enough space for ceremonial events. The existing cenotaph will be placed at the centre of the memorial.

A new avenue of deciduous trees will line the memorial entrance path and a new Lone Pine tree will be planted on the eastern side.

The project is supported by the Victorian Government through the Better Parks and Playgrounds Program.



View these and other plans for the new memorial and learn more about the Homefront sculptures at banyule.vic.gov.au/Homefront



Whose Paradise?

As part of Council's ongoing celebration of Heidelberg School masterpieces, on long-term loan from the National Gallery of Australia as part of Sharing the National Collection, we have invited leading Australian artists to enter into a critical dialogue with this treasured heritage.

Whose Paradise? by Jill Orr is a meditation on the idea of progress, weaving contemporary vision into the fabric of history. Her photographs are placed in conversation with Heidelberg School paintings, creating a layered narrative where past ideals and current questions converge.

Whose Paradise? by Jill Orr

📅 6 February – 12 April

Opening Night: Saturday 7 February, 6pm – 8pm

📍 Art Gallery 275, Ivanhoe Library and Cultural Hub

Gallery opening hours: Tuesday – Sunday 10am–5pm

*Image: (detail of) Same Place Different Time – Making Waves, 2025, by Jill Orr.
Photographer: Christina Simons for Jill Orr © 2025*



Autumn bike skills classes

Bookings
essential

Our autumn season of subsidised bike skills classes commences in February and is open to all who live, work or study in Banyule.

Bike maintenance

Hands-on workshop. Bring your own bike and learn how to keep it in top condition. You'll leave ready to fix a puncture, take care of your chain and much more.

For ages 13 and up (teenagers to be accompanied by an adult).

Cost: \$25 full, \$15 concession.

📅 Saturday 28 February, 2pm – 4.30pm

📍 Macleod Community Hall

📅 Tuesday 24 March, 6pm – 8.30pm

📍 Henry Street Community Hall, Greensborough.

Book at trybooking.com/1423377



On-road bike confidence

For adults who can ride confidently on shared paths and want to start riding on the road. Includes on-road riding in light traffic.

Cost: \$25 full, \$15 concession.

📅 Saturday 14 February, 10am – 3pm

📍 Ivanhoe Library and Cultural Hub

Book at trybooking.com/1423359



📅 Sunday 22 March, 10am – 3pm

📍 La Trobe University, Bundoora

Book at trybooking.com/1423366



Helping homeless people on their turf

We're reaching out to rough sleepers and people who are homeless in the places they live. It's part of a bold pilot program to end homelessness in our community.

Council has partnered with Merri Outreach Support Service (MOSS) to deliver the Banyule Assertive Community Outreach Program and connect with people who have no permanent place to live. Council has put forward \$180,000 to fund the pilot.

Staff from MOSS go out into the community to engage directly with people sleeping rough, getting to know them and their individual needs. Research shows it can take multiple interactions to build enough trust to make progress.

A joint effort

Banyule is part of a joint effort to tackle homelessness. MOSS is running similar programs with Whittlesea, Yarra and Merri-bek councils.

Homelessness is a problem that is much bigger than any single local council. Together, we will continue to advocate for more substantial, long-term funding and solutions from other levels of government.

You can help


We've created a simple online form for community members to notify us of a person sleeping rough. We will use this information to connect people with the help they might need.


Let us know if you see a person sleeping rough in Banyule. Scan the code or head to banyule.vic.gov.au/homelessness



If a person appears distressed, in need of physical or mental health help, or appears to be a danger to themselves or others, call 000.

Solar panels and battery workshop

 Tuesday 24 February
6.30pm – 7.30pm

 Banyule Council offices, 1 Flintoff Street, Greensborough

Harness the power of the sun to save on your energy bills and help the environment. Join experts from Solar Savers at this popular free workshop for an hour of information about renewable energy and saving money. We'll cover:

- Integrating a solar system with battery storage
- Making the most of solar panels
- Saving money on energy bills with new technologies and subsidies

Homeowners and renters welcome.

Bookings essential. Book online at banyule.vic.gov.au/PanelsandBattery or call 9242 3451.



Don't forget, register your pet!

Do you have a new pet? Registration is an important part of being a responsible pet owner.

If your dog or cat goes missing, being registered greatly improves their chances of being returned to you.

As well as helping to return lost pets to their owners, animal registration fees support dog park facilities, park patrols and taking action on nuisance complaints, like barking dogs.

Dogs and cats over three months old must be microchipped and registered, and there are fines for unregistered animals.

Even assistance and guide dogs must be registered (but there is no fee or renewal process for them).

Pet registrations expire on 9 April each year. You will receive a reminder in February to renew your pet registration.

Registration is easy:

- Follow the steps online at banyule.vic.gov.au/RegisterNewPet
- Phone **9490 4222**.





Free and friendly fun for all at Banyule Eco Festival

Join us for Banyule's biennial Eco Festival in beautiful Petrie Park, Montmorency.

The festival is a pet-friendly and sustainability-focused event with:

- Workshops on environmental and animal themes
- Live music from local performers and schools
- Gardening activities
- Live reptile display
- Craft and creative spaces
- Demonstrations, professional tips and tricks
- Educational sessions and information about how to be a responsible pet owner
- Face painting
- Council departments on display
- Market stalls
- Smoothie blender bikes
- Food and drink trucks

Bring your pet (on a lead of course!) and join a celebration with the local community. Banyule Eco Festival is free and family friendly.

There will be food and drink available for purchase and free water stations – BYO water bottle or coffee cup.

Banyule Eco Festival

📅 Sunday 15 March 2026, 11am – 4pm

📍 Petrie Park, Montmorency

For all the details, visit
banyule.vic.gov.au/EcoFest



Urban Forest Forum at Eco Festival

Our Urban Forest Forum is back for 2026 as part of Eco Festival. Hear updates on our Urban Forest Strategy and take part in lively conversations about the key issues shaping Banyule's urban forest.

It's a great chance to stay informed, ask questions and connect with others who care about creating cooler, greener and more liveable neighbourhoods.

Urban Forest Forum

📅 Saturday 15 March at Eco Fest,
time TBA – check website

📍 Petrie Park Community Hall, Montmorency

Celebrate pride, connection and creativity in Banyule

Returning for the second year as part of Melbourne's Midsumma Festival, Sunset Pride Party is a free all-ages celebration in the heart of Greensborough.

There will be disco DJs, roaming performers, market stalls and surprise activities for a joyful evening of fun, expression and togetherness.

Sunset Pride Party is presented by Visit Greensborough.

Sunset Pride Party

📅 Friday 6 February, 5pm – 9pm


📍 Greensborough Walk, Greensborough



Outdoor movies

Discover the charm of outdoor cinema at this free family-friendly double film screening, with live music and a local vendor selling coffee and snacks.

No bookings necessary. Some beanbags will be provided, but we recommend BYO picnic blankets and low chairs. There will be an accessible toilet and films will have open captions.

 Sunday 1 February

 Price Park, Lyon Road, Viewbank (near the playground)

4pm – Over the hedge (G) 6.30pm – Paper planes (G)





Family fun at Beale Reserve

Join us for a day of fun and activities at Anthony Beale Reserve in Greensborough.

This free family-friendly event will feature creative and crafty workshops, hands-on activities with local Scout groups, sustainable transport info stall where you can make your own pedal powered smoothie, bike maintenance sessions, live music by local artists, pet photobooth and sport activities run by local clubs. All followed by a film screening of Think like a dog (PG).

Beale Family Day

 Sunday 22 March
Workshops & activities: 12pm – 3.30pm
Outdoor movie: 3.30pm – 5pm (with captions)

 Anthony Beale Reserve, St Helena Rd, Greensborough (next to St Katherine's Church)

Free event, no bookings required.

Dogs on lead welcome.

Food, coffee & community BBQ.

banyule.vic.gov.au/BealeDay



Ivanhoe Library & Cultural Hub

Events & activities

📍 275 Upper Heidelberg Rd, Ivanhoe
🌐 banyule.vic.gov.au/ILCH
✉ arts@banyule.vic.gov.au
☎ 9490 4222

Art Gallery 275: Tuesday to Sunday, 10am – 5pm
(Closed Mondays)
Loft 275: open during library hours

Loft 275

Still, We Bloom

by **Isabella Wang**

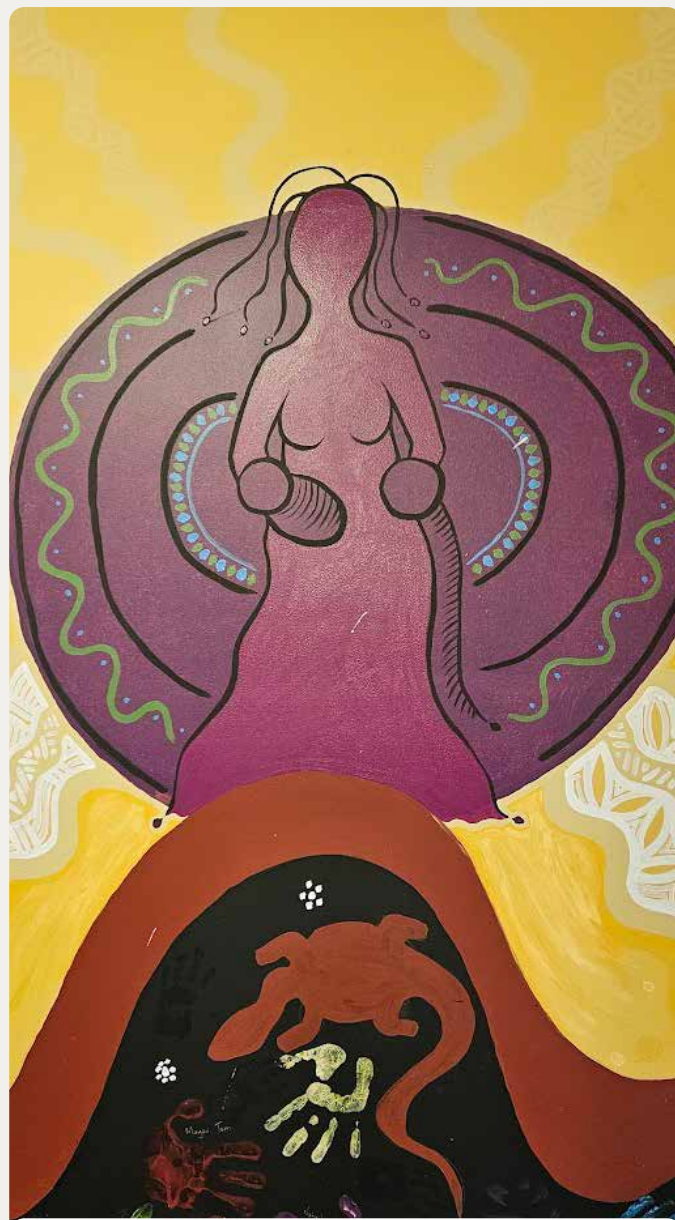
📅 5 February – 1 March

Opening Night: Saturday 7 February, 6pm - 8pm

Isabella Wang's practice across multiple media includes Chinese ink paintings on Xuan paper, ceramics, architectural line drawings, and watercolour with charcoal. The works depict fleeting moments — a branch, a bird, a shifting wash of colour.

Isabella will be in residence in the Mungga Artist Studios during February. Check website in February: banyule.vic.gov.au/ILCH

Image: Still, We Bloom, by Isabella Wang



Loft 275

Storylines

📅 5 - 29 March

Opening event: Saturday 7 March, 2pm - 4pm

Celebrating the many ways that First Nation's women of Barrbunin Beek tell story.

In celebration of International Women's Day (8 March).



Loft 275

Top 10 Small Dogs

📅 15 January – 1 February

The testament of 10 small dogs by artists Molly Barczak, Indigo Gordon, and Josie Sullivan.
In celebration of Midsumma Festival.

Image: telltale, 2025, by Indigo Gordon





Twilight Sounds

Twilight Sounds is a fantastic free and sensory-friendly concert held on a summer evening at Heidelberg Park oval. It features live music by popular Australian musicians playing a wide range of styles.

📅 Saturday, 14 February, 5pm – 10pm

📍 Heidelberg Park Oval (Heidelberg Cricket Ground), Heidelberg

A selection of food trucks will be available on site and there will be roving performers and free creative play for kids.

This is not a pet-friendly event, please leave your animals at home. Keep in mind the event is located on grass with limited sealed pathways.

Twilight Sounds is fully supervised and promotes a culture of safety and inclusion.

Twilight Sounds is proudly supported by:



Nelson Alexander



Performers

- The Ferguson Rogers Process
- Kaiit
- CJ Commerford & The Supertones
- David Cosma

Kids' zone

Visit the kids' zone for free craft workshops, hair braiding and face painting.

Access and inclusion

- accessible parking and drop-off via Beverley Road
- on-site accessible toilets
- wheelchair/scooter charging at Council info tent
- large screen for better viewing
- Phonic Ear system and noise-cancelling headphones available to borrow from info tent
- high visibility event staff and emergency workers

FREE
EVENT



Learn to garden for joy and health

Gardening is a simple, joyful way to nurture body and mind. It gets you moving in the fresh air, reduces stress and boosts wellbeing through connection with nature.

Whether you're planting, harvesting or simply hanging out, gardening offers a powerful sense of achievement and calm. When shared with others, it brings people together, building community and connection.

St John's Riverside Community Garden received a Council Environment Grant to hold a series of workshops to help people get into gardening. Starting mid-March, six sessions for beginner gardeners will be held at the garden in Heidelberg. Three presenters will run the hands-on workshops:

- Kat Lavers: small space food production specialist and permaculture designer
- Connie Cao: urban permaculture homesteader, who has appeared on Gardening Australia
- Kayte Kitchen: counsellor, educator and horticultural therapist.

Find out more and sign up at tinyurl.com/learn2garden



Social pickleball

We are trialling a new social pickleball program at Nets Stadium in Macleod, every Friday morning in February and March.

Sessions are led by our friendly Banyule Leisure staff and are for beginners and those who want to play socially.

Sessions are 45 minutes and include breaks. We offer sessions at 9am and 10am every Friday.

It's a great time to learn to play, with Council building pickleball courts at several tennis clubs across Banyule.

For questions about the program contact Active Banyule Lead Catherine Corbett, phone **9242 3471** or email catherine.corbett@banyule.vic.gov.au

Book via Council's website at banyule.vic.gov.au/pickleball



Waste crossword answers

Across: 1) Rubbish, 3) Compost, 6) Refuse, 8) Recycling 9) Steel, 10) Leaves, 12) Trees, 13) Landfill, 17) Loose, 18) Bone, 19) Contamination

Down: 2) Batteries, 4) Peels, 5) Litter, 7) Silica, 11) Environment, 14) Organics, 15) Ocean, 16) FOGO

Ward Rounds

Banyule is made up of nine wards. To find out which ward you belong to scan the code



Cr Peter Castaldo
Griffin Ward

peter.castaldo@banyule.vic.gov.au
0466 502 698

I was delighted to help release dwarf galaxias into the water at Nangak Tamboree Wildlife Sanctuary. This endangered species was bred in the Native Fish Australia hatchery at La Trobe University.

Our Parks and Natural Environment team has identified sites in Banyule for fish to be released, under appropriate permits. It's about increasing biodiversity in our waterways,

including those in Griffin Ward – Saltwater Creek and Yarra River.

You can tour the Native Fish Australia hatchery. Check their social media or head to nativefish.asn.au

Nangak Tamboree is a beautiful place to visit. It has a plant nursery and can advise on the right plants to support biodiversity in your neighbourhood. Visit latrobe.edu.au/wildlife



Cr Alison Champion
Sherbourne Ward

alison.champion@banyule.vic.gov.au
0466 486 593

Sugar or Krefft's gliders are nocturnal marsupials that glide between trees, and an important part of our local ecosystem.

The Montmorency Biodiversity Group (MBG) monitors the glider population with a regular nesting box census.

Jen and Alan (pictured) showed me how they use pole cameras to check the boxes.

Many locals have a nesting box at home. Over half of those monitored are on private property, supplementing wildlife corridors.

My yard isn't suitable for a nesting box so we've purchased two boxes for wildlife corridor locations. Find out more about the Monty Sugar Glider Project (part of the MBG) at transitionmonty.org/sugar-glider-krefts-projects



Cr Matt Wood
Hawdon Ward

matt.wood@banyule.vic.gov.au
0403 705 289

Did you know Council offers a free service to connect local residents with the services and support they need?

We know it can be challenging accessing support services. Our Community Connectors will guide you through the administrative maze and give you up-to-date information on aged services, housing, mental health, hardship and emergency relief and disability support.

They'll also connect you with local groups and clubs to keep engaged in the community.

Our help is personalised and tailored to your needs but we cannot offer case management services.

Contact our Community Connectors: phone **9457 9800** 9am – 5 pm weekdays, email service.navigation@banyule.vic.gov.au or visit banyule.vic.gov.au/ServiceNavigation



Ward Rounds



Cr Elizabeth Nealy
Beale Ward

elizabeth.nealy@banyule.vic.gov.au
0435 243 598

Settlers Park Playground in St Helena (near St Clems Street) has new play equipment for younger children, a hybrid court with a basketball ring and exercise equipment to appeal to all ages.

It was lovely to see locals out there enjoying the upgraded playground and lovely bushland setting when I dropped by recently.

Thank you to all who made suggestions for renewing this playground and others in Eltham North and St Helena.

Settlers Park North has also been upgraded and work is underway in Glen Katherine Drive and St Clems Reserves, part of Council's more than \$9.5 million investment in parks, gardens and playgrounds this financial year.



Cr Mark Di Pasquale
Bakewell Ward

mark.dipasquale@banyule.vic.gov.au
0481 002 299

Watsonia is at the heart of some of the biggest infrastructure works happening in Banyule, with the North East Link construction, and our recently completed Watsonia Town Square which has transformed the shopping village. Next, keep an eye out for when the Watsonia Station Urban Design and Landscape Plan (UDLP) goes on exhibition for your chance to have a say on it, likely to be

early this year. For the latest, check engage.vic.gov.au/north-east-link

We are advocating for key changes to the UDLP, to include a redevelopment that makes the most of this opportunity. We are calling for an upgraded station precinct with better accessibility and connectivity across the rail line, North East Link and Greensborough Highway.



Cr Alida McKern
Chelsworth Ward

alida.mckern@banyule.vic.gov.au
0435 316 318

L2P has supported hundreds of local young people, reducing transport disadvantage and improving access to driver education. The program pairs young people with volunteers for supervised driving experience.

Run by Banyule-Nillumbik Local Learning and Employment Network, L2P is community partnership at its best, combining road safety, youth development, and social inclusion.

Thank you to the BN LLEN for this wonderful work and to the volunteers who have helped so many young people. I joined a celebration of L2P at Ivanhoe Bowling Club with Peony, Ian (L2P volunteer instructor), and Pam (IBC President).

If you'd like to get involved as a learner driver or a volunteer, visit bnllen.org.au/l2p-program



Banyule is made up of nine wards. To find out which ward you belong to scan the code



Cr Mary O'Kane
Olympia Ward

mary.okane@banyule.vic.gov.au
0403 748 092

Planning for Banyule's draft budget for 2026/27 has started and we need your input. Share ideas in three ways:

Big picture: Give feedback on council-wide programs like capital works (facilities, roads, footpaths, parks) and initiatives (activities for health, wellbeing and sustainability).

Local focus: Tell us what your area needs (e.g. Olympia Ward).

Revenue raising: How should Council raise funds to pay for it all?

There's always more to do than money allows, so we work together to set priorities. See p4 for more.

Once we have gathered input from the community, from Councillors and from Council teams across all wards, we decide what we can deliver this year and plan for the next three years.



Cr Rick Garotti
Grimshaw Ward

rick.garotti@banyule.vic.gov.au
0490 014 965

Bundoora Tennis Club is one of several Banyule clubs getting a pickleball court as Council rolls out facilities for this popular new sport. I dropped in to check the pickleball site behind the clubhouse at NJ Telfer Reserve and had a hit up with junior member Genevieve and club president Shayne Collins.

Bundoora TC has more than 500 members and, through an

arrangement with RMIT Bundoora, members have access to free treatment sessions with senior chiropractic and osteopathy students.

Find out more at the club's open day on Sunday 1 March, 10am – 2pm. There'll be a sausage sizzle and free activities including cardio tennis, pickleball, totem tennis, fast serve and ball machine. Check out their website: bundooratennisclub.com.au



Cr Alicia Curry
Ibbott Ward

alicia.curry@banyule.vic.gov.au
0403 736 326

As we start the school year, I want to express my appreciation to all the school crossing supervisors who help families across busy roads every morning and afternoon.

Supervisors like Bronwyn, who has worked at a crossing at Golf Links Primary School for more than 20 years, know the families and become part of the protective neighbourhood network that keeps our children safe.

"It's a very rewarding job. I get to see the children grow from preppies to teenagers," she told me.

Thank you to Bronwyn and all Banyule's school crossing supervisors, who are outside in all weather, through all seasons, protecting our children.

We're often looking for reliable people to be crossing supervisors. Interested? Call Customer Service on **9490 4222**.



Snakes alive in Banyule reserves

Snakes are most active in bushland reserves through the warmer months, from September to April. They're beautiful creatures best appreciated from a distance.

Our local reptiles have excellent camouflage to blend in with their environment, making it hard to spot them in the bush. To minimise interactions with snakes, we recommend sticking to paths and keeping dogs on lead when walking through bushland reserves over spring and summer.

If you see a snake while you're out and about, stay calm and still. Make sure the snake has an escape route and appreciate it from a distance.

Reptiles are a vital part of our local ecosystems. Snakes prey on potential pest species such as mice and are themselves an important food source for a range of native birds such as kookaburras.

The most common species of snake found in Banyule is the tiger snake (pictured), which is found in most of our bushland reserves, especially those with wetlands, rivers or creeks.



Move It Mob March

We're inviting Banyule's First Nations community to get active with a calendar of activities and outdoor events in March.

Barrbunin Beek Aboriginal Gathering Place in Heidelberg West is a dedicated community hub for local Aboriginal and Torres Strait Islander people. Barrbunin Beek means 'happy place' in Woi-wurrung, the language of Banyule's Traditional Owners, the Wurundjeri Woi-wurrung. Connect on their social media or via the website at barrbuninbeek.org

And check Council's website for Move It Mob March events: banyule.vic.gov.au/WhatsOn

**A MONTH OF
ACTIVITIES
FOR FIRST NATIONS
RESIDENTS
IN BANYULE CITY
COUNCIL**



Bushland Diaries

Want to get more involved in your local environment this year?

Joining one of Banyule's environmental Friends groups is a great way to support the health of our bushland reserves.

These volunteer groups work alongside experienced Park Rangers to protect and enhance biodiversity through hands-on activities such as planting indigenous vegetation, building nesting boxes, removing weeds, and joining guided nature or spotlight walks.

Friends groups are welcoming, community-focused, and offer valuable field experience for anyone interested in conservation.

One active example is the Friends of Anthony Beale. They have been working with the Bushland Management Unit to establish a new biodiversity site below the conservation reserve in Anthony Beale Reserve.

Previously a mown area, the site was fenced and the group has helped with ecological and weed-control burns, soil scarification to encourage new growth, hand-weeding, direct seeding, and reintroducing rare and threatened plant species.

These efforts aim to reduce weeds, increase indigenous flora, support native pollinators, and create an important stepping stone for wildlife moving between fragmented corridors.

Groups like the Friends of Anthony Beale welcome newcomers of all ages and experience levels.

Getting involved is a rewarding way to support the environment, learn new skills, and connect with a passionate community dedicated to caring for Banyule's natural spaces.

Interested in volunteering?

Help us conserve bushland reserves by joining a Friends group.

Find your nearest group at banyule.vic.gov.au/FriendsGroup



Twilight Sounds

2026

LIVE MUSIC &
FOOD TRUCKS

**SATURDAY
14 FEBRUARY**

5PM – 10PM
Heidelberg Park Oval
Beverley Road

Contact us

All enquiries

PO Box 94, Greensborough, VIC 3088
Phone 9490 4222
enquiries@banyule.vic.gov.au
banyule.vic.gov.au

Council Service Centres

Greensborough 1 Flintoff St
Ivanhoe 275 Upper Heidelberg Rd

Deaf, hearing or speech impaired

Call us through the National Relay
Service on 133 677 (TTY) or 1300 555
727 (ordinary handset) and contact
9490 4222.

Interpreter service

إذا كنتم بحاجة إلى مترجم يرجى الاتصال
بالخط القومي للترجمة الهاتفية على الرقم
131 450 وطلب إيصالكم ببلدية بانيول على
الرقم 9490 4222.

如果你需要一名翻译, 请打电话
到国家电话翻译服务处
(TIS National) 131 450, 再转接到
Banyule市政府9490 4222

若你需要口譯員, 請致電
131 450聯絡TIS National,
要求他們為你致電9490 4222
接通Banyule市政廳。

Ako vam je potreban tumač,
molimo vas, nazovite TIS
National na broj 131 450 i
zatražite da vas se spoji sa
Vijećim općine Banyule na
broj 9490 4222.

Se hai bisogno di un interprete
chiama TIS National al numero
131 450 e chiedi di essere messo
in comunicazione con il Comune
di Bayule al numero 9490 4222.

Αν χρειάζεστε διερμηνέα
τηλεφωνήστε στην Εθνική
Υπηρεσία Διερμηνέων
Μεταφραστών στον αριθμό
131 450 και ζητήστε να σας
συνδέσουν με τη Δημαρχία
Banyule στο 9490 4222.

Ако ви треба преведувач
ве молиме јавете се на TIS
NATIONAL на 131 450 и
замолете да ве поврзат со
Banyule Council на 9490 4222.

Haddii aad u baahan tahay
mutarjum wac khadka qaranka
oo ah TIS 131 450 weydiina in
lagugu xiro Degmada Banyule
tel: 9490 4222.

Nếu cần thông dịch, xin gọi cho
TIS Toàn Quốc qua số
131 450 rồi nhờ họ gọi cho
Hội Đồng Thành Phố Banyule
theo số 9490 4222 giúp quý vị.