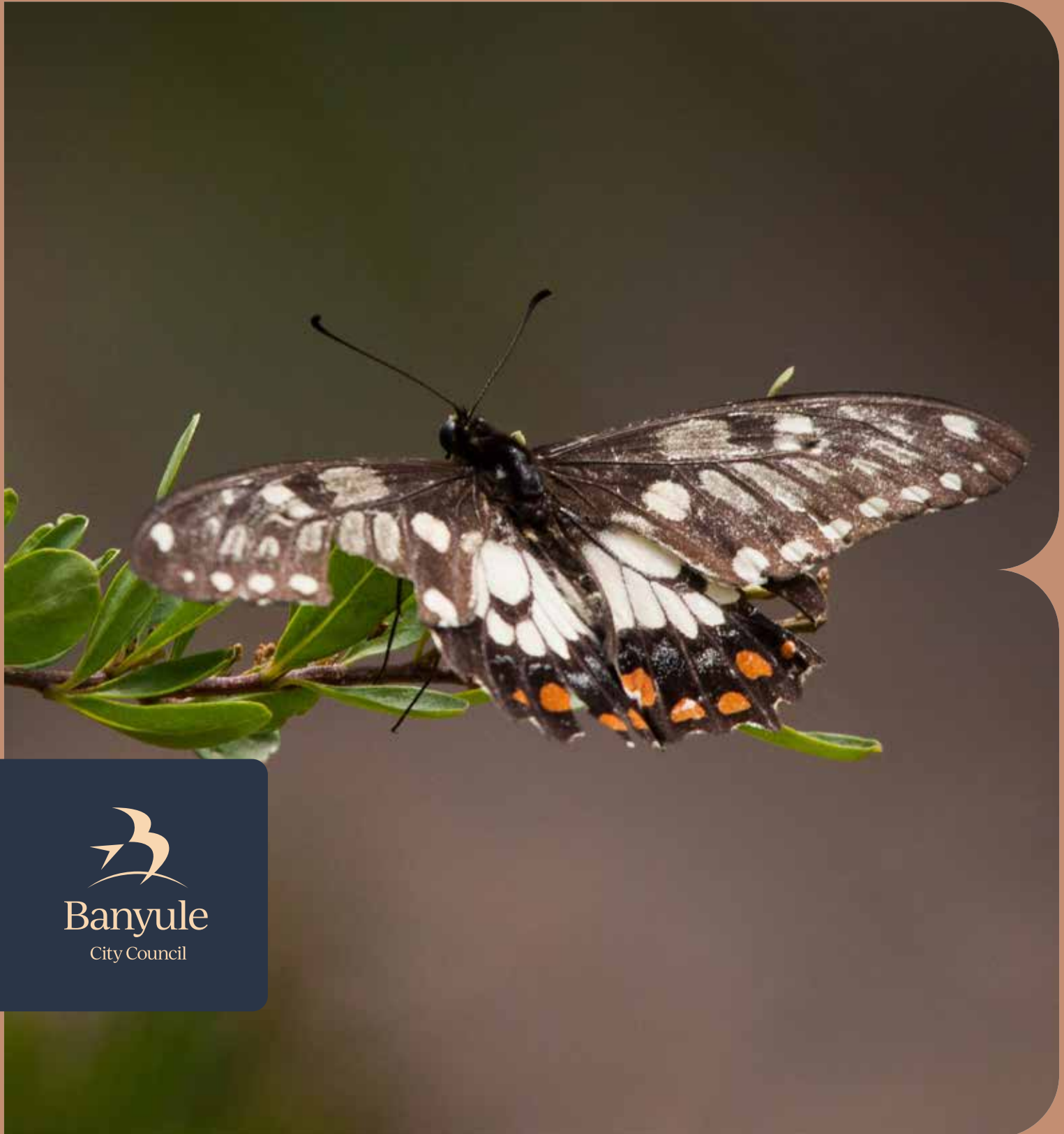


# Banyule Banner

May 2025

3	Planning reforms
6	Building a better Banyule
9	National Reconciliation Week



# Mayor's Message

Mayor  
Cr Elizabeth Nealy

## One-size planning rules don't fit all

Recent Victorian Government planning reforms could have a lasting impact on Banyule. The changes came into effect in March.

We're advocating for improvements to retain Council's ability to apply local knowledge to housing developments in our community.

It's an evolving situation. We'll keep you informed in the Banner and on our website. Read more on [page 3](#).

## The Boulevard

The Boulevard in Ivanhoe East and Eaglemont is in poor condition, with cracks and potholes posing a risk to cars, bikes and pedestrians. We've consulted with the local community about a plan to resurface the road while preserving its rural character and connection to Yarra Flats.

We know some are concerned that fixing the road will increase traffic and change its country feel.

We'll keep working with the community to find a solution that balances local views with our obligations under the Road Management Act.

See more at [shaping.banyule.vic.gov.au/BoulevardImprovements](https://shaping.banyule.vic.gov.au/BoulevardImprovements)

## North East Link and parking

We're hearing the frustration of residents with ongoing parking and traffic congestion in local streets around the North East Link Project.

The North East Link Project is responsible for providing parking for its workforce, but we're also doing everything we can to support residents, including applying and enforcing new parking restrictions in the area. Read more on [page 14](#).



## Thanking Banyule's volunteers

This National Volunteer Week (19 – 25 May) we celebrate the important contribution of volunteers. I'd like to give a whole-hearted thank you to all the volunteers in our community.

Volunteers make such a difference to community life in Banyule, keeping local services, organisations and clubs running; lending a helping hand to fellow community members or caring for our environment.

Find out more about National Volunteer Week and read a great profile of one of our local volunteers on [page 15](#).

## National Reconciliation Week

National Reconciliation Week is 26 May to 3 June. Check out [pages 8 and 9](#) to find out how you can participate in Banyule's Reconciliation Week events.

# Council challenges one-size-fits-all planning reforms

**The Victorian Government has introduced major planning reforms that could have significant and lasting impacts on Banyule neighbourhoods.**

The changes have been imposed on all Victorian councils with minimal time to inform communities or to have input.

We are particularly concerned about the changes for town house and low-rise apartment dwellings, which came into effect in March. These changes overhaul parts of ResCode, the planning rule for single or multiple dwelling developments that require a planning permit.

New "deemed to comply" standards will limit the ability of councils to make decisions on local developments. The standards set out minimum requirements that we cannot challenge.

## These include:

- street setbacks
- side and rear setbacks
- site coverage
- tree canopy coverage
- building height
- walls on boundaries
- access
- front fences

While the reforms aim to streamline the permit process and increase housing delivery, there is a real risk of Banyule Council being stripped of its ability to apply local knowledge and expertise to housing developments.

These reforms are likely to seriously impact on Banyule's neighbourhood character, residential amenity, infrastructure and tree canopy. Council acknowledges the need for more and varied housing options, but we know that a one-size approach does not fit all.

We know Banyule best and should continue to plan with and for the Banyule community.

We are advocating to the Victorian Government for improvements to the planning reforms.



In the light of the Victorian Government's planning reforms, we will be updating our web pages over the coming months. For assistance and advice with planning matters, please contact Council on **9490 4222**.

## Stay in touch with us online

Email newsletters  
[banyule.vic.gov.au/subscribe](https://banyule.vic.gov.au/subscribe)

@BanyuleCouncil

## Have your say on important projects and local initiatives

[shaping.banyule.vic.gov.au](https://shaping.banyule.vic.gov.au)

COVER: Attract insects like this dainty swallow butterfly by planting indigenous plants – *Bushland Diaries*, page 23.

## Council Meetings

Upcoming dates:  
5 May  
26 May

From 7pm

Council Chambers @ Ivanhoe Library and Cultural Hub,  
275 Upper Heidelberg Road,  
Ivanhoe

For agendas, minutes, public question time and request to speak forms, visit [banyule.vic.gov.au/CouncilMeetings](https://banyule.vic.gov.au/CouncilMeetings)

Banyule City Council is proud to acknowledge the Wurundjeri Woi-wurrung people as Traditional Custodians of the land and we pay respect to all Aboriginal and Torres Strait Islander Elders, past, present and emerging, who have resided in the area and have been an integral part of the region's history.

Our community is made up of diverse cultures, beliefs, abilities, bodies, sexualities, ages and genders. Council is committed to access, equity, participation and rights for everyone; principles which empower, foster harmony and increase the wellbeing of an inclusive community.



## Celebrating the festival season

**Thank you to everyone who attended our events over the summer and autumn festival season. We hope you enjoyed it as much as we did!**

With many in our community experiencing cost-of-living pressures, Council's free events and activities are more popular than ever. Turn to [page 22](#) for a round-up of the season.

## Celebrating community all year round

Read on to discover heaps more free and low-cost activities, including local performers in local venues for Chillin' in Banyule, [page 16](#).

Left: Cirque Mistique performs at Lantern Festival in March.



# Shaping Banyule

Get involved in local projects



## Special charges scheme

Special charges fund the building of new infrastructure requested by residents, such as sealing gravel roads and the construction of new drainage and footpaths.

Council has developed a draft Special Charges Scheme Policy to ensure our process is clear and fair, treats all requests the same and makes efficient use of Council resources. Share your thoughts until 15 May.

### Your Council Contact:

**Mohammad Rashid, Asset Management Coordinator**

**Phone:** 9433 7730

**Email:** [AssetManagementTeam@banyule.vic.gov.au](mailto:AssetManagementTeam@banyule.vic.gov.au)

Scan the code or visit [shaping.banyule.vic.gov.au/SCS](https://shaping.banyule.vic.gov.au/SCS)



## Managing our roads

The Road Management Plan outlines how Council takes care of roads, footpaths, kerbs and other parts of the road area. It talks about the importance of these assets, how often we check them for problems, how we spot issues and how quickly Council will fix things.

Have your say on the proposed Road Management Plan 2025 – 2029 until 22 May.

### Your Council Contact:

**Mohammad Rashid, Asset Management Coordinator**

**Phone:** 9433 7730

**Email:** [AssetManagementTeam@banyule.vic.gov.au](mailto:AssetManagementTeam@banyule.vic.gov.au)

Scan the code or visit [shaping.banyule.vic.gov.au/BanyuleRoads](https://shaping.banyule.vic.gov.au/BanyuleRoads)



## Caring for Banyule's Pets

The Domestic Animal Management Plan shows how Council will manage dogs, cats and other pets in Banyule. It encourages people to take good care of their pets and ensures animals are treated well, while preventing pets from causing problems for the community and the environment.

### Your Council Contact:

**Angela O'Brien, Team Leader Municipal Laws**

**Phone:** 9490 4404

**Email:** [enquiries@banyule.vic.gov.au](mailto:enquiries@banyule.vic.gov.au)

Scan the code or visit [shaping.banyule.vic.gov.au/DAMPlan](https://shaping.banyule.vic.gov.au/DAMPlan)



## Banyule Futures

Your Voice  
Our Future

### Our plans and budget for the next four years

We've been working with the community on plans for Banyule's future and together we've accomplished a lot! With your input we've developed and refined the draft Banyule Plan for the next four years, which includes the Health and Wellbeing Plan, and we're working on the final steps towards adoption. You've also helped us to draft the Asset Plan, Financial Plan, Revenue and Rating Plan and Budget.

#### April – June 2024

We asked our community about local priorities and concerns to develop our Plans. 970 people took part in a variety of activities including:

- Precinct-level surveys
- 10 pop-up conversations held across Banyule
- Four Community Vision workshops.

#### March – April 2025

- Community review and comments on the draft plans
- Online information session and Q&A to talk about the plans
- Seven pop-up conversations across Banyule where we spoke with more than 190 people.

#### 26 May 2025

- Council meeting where Council formally considers community feedback on the draft plans and Budget.

#### June – December 2024

- The ThinkTank was formed – a group of 55 people, or 'mini-Banyule', made up of people from diverse backgrounds
- Four ThinkTank sessions took place to talk about Council's work and where the focus needs to be
- The ThinkTank recommended 34 priorities and nine principles to be incorporated into the draft Banyule Plan, Budget and other plans.

#### 15 April 2025

- Community members spoke to their feedback in a councillor feedback forum.

#### 23 June 2025

- Finalised plans and Budget presented to Council for adoption.

To find out more about Council's plans for the future and to receive updates, scan the code or visit [shaping.banyule.vic.gov.au/BanyuleFutures](https://shaping.banyule.vic.gov.au/BanyuleFutures)





# Building a better Banyule



## Rosanna Library on track

**Construction of the new Rosanna Library is progressing well, with foundation works complete and work beginning on the upper storeys.**

The new library will be a three-storey building with indoor and outdoor spaces. It will be double the size of the previous library, with a bigger children's area, co-working and study spaces, community meeting rooms and quiet spaces. Maternal and Child Health Services and a toy library will be on the ground floor.

Council recently awarded the contract for the \$4.5 million fit-out of the library, which includes furniture and equipment. You can see how it will look on our Shaping Banyule page (link below).

Construction is on track to be completed by the end of the year. In the meantime, the local community is served by a pop-up library at 56 Beetham Parade, Rosanna.

*Above: Councillors toured the site with the builder, Council project manager and Yarra Plenty Regional Library service CEO Jane Cowell.*

View the library fit-out and register for updates: scan the code or visit [shaping.banyule.vic.gov.au/RosannaLibrary](https://shaping.banyule.vic.gov.au/RosannaLibrary)



## James Reserve improvements

**\$1.07 million project fully funded by Council**

A new playground and toilet block at James Reserve in Heidelberg Heights is breathing new life into the popular park and planning for population growth in the area.

We'll complete the picture with new gardens and trees, providing shade and increasing tree canopy cover to help cool our towns.

Building is underway and should be completed in July.



## Loyola Reserve makeover

**Loyola Reserve is ready for year-round play thanks to a \$532,000 overhaul of the oval.**

We've redesigned the drainage and installed a new surface at the popular oval in Bundoora. The cricket pitch and baseball diamond have also been reworked.

The reserve is the home ground of Bundoora United Cricket Club and Watsonia Baseball Club and is used by Concord School. It's also well loved by local residents.

*Right: Cr Rick Garotti tries out the new baseball diamond with Watsonia Baseball Club juniors.*



## More works on the go

### Para Road path open

The new shared path along Para Road in Montmorency is complete, with planting along the track now finished. This section of the track beside the railway line was built by Council with funding from the Victorian Government's Level Crossing Removal Project.

### New footpath for Karingal Drive

We're building a new footpath, refuge island and pram crossings along Karingal Drive in Briar Hill, making it safer for pedestrians and motorists. This \$386,000 project is fully funded by Council.

### Greensborough cricket nets

Greensborough War Memorial Park has new nets with four practice pitches in an enclosed cage. The \$400,000 project was delivered by Council with funding from the Victorian Government. The old nets off the side of the oval will be removed to make way for a new cenotaph and larger memorial park area.

### Finishing touches for village upgrade

We're putting the finishing touches to the streetscape upgrade that has transformed East Ivanhoe Village and made it safer for pedestrians and motorists.

You may see workers replacing street lights and completing new accessible parking spaces. Gardens will be planted in the cooler months to help new plants establish.

### Monty's missing link

A short section of footpath has been added at the western end of Station Road in Montmorency, connecting to the shared use trail along the railway line.

### Nell Street safety improvements

We've built new speed humps and pedestrian crossings in Nell Street, Greensborough, to make this busy thoroughfare safer for pedestrians and motorists.

### Sports pavilions

- **Macleod Park** - second storey slab completed. The \$3.32 million new pavilion is jointly funded by Council and the Victorian Government. Home to Macleod Football Netball Club and Macleod Cricket Club, the community spaces will be available for hire. Completion expected February 2026.
- **Anthony Beale** - nearing completion. The \$1.5 million rebuild includes new changerooms, kitchen and viewing areas. Used by Greensborough Junior Football Club and local schools, it will be available for hire. Public toilets will be open for the many residents and dog walkers who use the ovals.
- **Greensborough Park** - \$650,000 upgrade nearing completion.
- **Yallambie Park** - work set to begin on upgrades including including changerooms, kitchen, social rooms and new public toilet block.



# National Reconciliation Week

**Bridging Now to Next**  
**26 May – 3 June**

**National Reconciliation Week is a time for all Australians to learn about our shared histories, cultures and achievements while fostering respectful relationships between Aboriginal and Torres Strait Islander peoples and the broader community.**

It marks two key milestones in Australia's reconciliation journey – the 1967 Referendum that allowed Aboriginal and Torres Strait Islander peoples to be counted in the

census and the 1992 High Court Mabo decision, which recognised native title and overturned the myth of terra nullius.

The theme for this year, Bridging Now to Next, is a reminder that while important progress has been made, there is still much work to be done to close the gap, hear First Nations voices and ensure future generations inherit a society where Aboriginal and Torres Strait Islander cultures, histories and contributions are acknowledged and celebrated.

## National Sorry Day healing ceremony

Monday 26 May, 1pm – 3pm

Malahang Reserve, corner Oriel and Southern roads, Heidelberg West

You are invited to join Wurundjeri Elders and representatives for a healing ceremony in which we honour the resilience of the First Nations community affected by the removal of Aboriginal and Torres Strait Islander children.

We welcome all who wish to participate in this meaningful occasion of healing and remembrance. Lunch will be provided. Scan the code to book your spot or visit [trybooking.com/1363130](https://trybooking.com/1363130)



## Barrbunin Beek family day

Saturday 31 May, 11.30am – 3pm

Barrbunin Beek Aboriginal Gathering Place  
55 Catalina Street, Heidelberg West

Come together with the First Nations community to see what we do as an Aboriginal Gathering Place and how we can work together in the spirit of Reconciliation.

Dancing, cultural craft, jumping castle, face painting, animal encounters and First Nations market stalls plus sausage sizzle.

Free event, all Allies and friends welcome.

Scan the code to book or visit  
[trybooking.com/1363147](https://trybooking.com/1363147)



## Waring season: wombats come out to play

Waring is the longest of the Wurundjeri seasons, lasting roughly from April to early August. It is the coolest time of the year, with high rainfall and misty mornings. Waring (wombats) emerge from their burrows to enjoy the warmth of the sun and to graze, a change from their summertime nocturnal behaviour.

Waring burrowing behaviour has an important role in our natural ecosystems, helping improve soil health by cycling natural nutrients to the surface and softening compacted soils to allow seedlings to take root.

Waring burrows provide protection and shelter to other native species, both from fires and non-native predators. The most common wombat species in Victoria is the bare-nosed wombat. If you're lucky you might spot one enjoying the winter sun.

All three wombat species are only found in Australia, as is the case with 80% of mammal species that occur on the continent. Australia is one of the most biologically diverse countries on the planet and most of our animals and plants are found nowhere else.

Australia is also one of the world's regions most at risk for biodiversity loss, meaning that efforts in regeneration, environmental education and conservation are vitally important. We have to care for country if we want it to care for us.



## Banyule's Marrageil Strategy: a commitment to self-determination

**Council's reconciliation efforts are guided by the Marrageil Strategy.**

Marrageil means "powerful" in Woi-wurrung.

The strategy is a roadmap for including Aboriginal perspectives across Council's work and strengthening

relationships with Traditional Owners and First Nations organisations. It is about self-determination – the ability of Aboriginal and Torres Strait Islander peoples to make decisions on matters that impact their lives.

During Reconciliation Week, we encourage everyone to get involved and be part of this important movement. Together, we can make a lasting impact.



# Inclusion and diversity in sport

Ivanhoe Bowls Club is leading the way in creating a welcoming and inclusive environment where everyone feels valued and respected, regardless of their background or ability.

Diamond Valley Special Development School students attend the club regularly for cooking classes, with the added benefit of fun bowling lessons with club members.

Students are supported by their teachers to enjoy a range of activities in the local community to develop skills and broaden their experiences.

Ivanhoe Bowls Club is a Council-owned facility. Its large multi-purpose meeting space and well-equipped kitchen are available for hire by community groups and for private and corporate functions, including barefoot bowls.

Contact Sue on **0421 774 438** or visit [ivanhoe.bowls.com.au](http://ivanhoe.bowls.com.au)

## All welcome

Council works with local sporting clubs to create inclusive and supportive environments so everyone in the community can participate in sport and recreation activities.

Ivanhoe Bowls Club is one of three Banyule clubs participating in Proud2Play's 'Rainbow Ready Clubs' program.

Funded by Council, the program helps clubs ensure they are inclusive and supportive for Banyule's LGBTIQ+ community.

Other local sporting clubs in the Rainbow Ready program are Heidelberg Junior Football Club and Diamond Valley Athletics Club.




Above: Cooking lessons at Ivanhoe Bowls Club with, L-R, Oliver, Cr Alida McKern, club president Pam, Oliver and events manager Sue.

Below: Oliver tries his hand at bowls with Sue and Pam.



### Ivanhoe Bowls Club Open Day

 Sunday 25 May, 10am – 3pm

 Ivanhoe Bowls Club, John Street, Ivanhoe

## Banyule grants are opening soon

Each year Council offers a range of grants to help community groups, individuals and organisations deliver projects that contribute to making Banyule a better place to live.

Applications for community and arts and culture grants open Monday June 30. Applications for environment grants open Monday August 4

For more information, including upcoming information sessions, scan the code or visit [banyule.vic.gov.au/grants](http://banyule.vic.gov.au/grants)



# How FOGO has grown

## FOGO = food organics, garden organics

Remember, compostable packaging (including compostable bags and caddy liners) doesn't belong in your FOGO bin.



## It's almost FOGO's third birthday. Thanks to your efforts, we've been turning food scraps into nutrient-rich compost for parks, gardens and farms.

The Banyule community's commitment to FOGO is making a huge impact. Before FOGO, we were recycling and composting about 52% of our waste. Now, we've hit over 65%. That means more waste is being put to good use and less is ending up as costly landfill.

A huge THANK YOU to our amazing community for making this happen. Let's keep up the fantastic work and see how much further we can go.




### Autumn leaves are falling!

We love the stunning autumn display from Banyule's deciduous trees, but heavy leaf fall is noticeable in some streets. Council's street sweepers regularly clear leaves and other debris from our streets.

During autumn, we allocate additional resources and you may see our street sweepers out more regularly in areas where we have higher leaf drop. Please be patient with us during this very busy period for our street sweepers.



### Saving the season: food preserving workshop

 Saturday 24 May, 10.30am – 1.30pm

 Greenhills Neighbourhood House

Learn how to transform excess produce into jars of delicious preserves. See different techniques and make your own to take home. This free workshop is part of the **Banyule Loves...** series.

Scan the code to register or visit [banyule.vic.gov.au/WhatsOn](http://banyule.vic.gov.au/WhatsOn)





## Dig in for indigenous plants

May is the perfect time of year to plant indigenous species. The cooler weather gives new plants time to establish before the heat of summer.

Indigenous species are highly suited to local soils and climate conditions and require little maintenance or watering. They are ideal for the novice or relaxed gardener.

Turn to **page 23** for our indigenous plants 'buy one, get one free' voucher offer.

To learn more about Banyule's indigenous plants, visit [banyule.vic.gov.au/NativeFlora](http://banyule.vic.gov.au/NativeFlora)



## Are common mynas taking over your garden?

Common mynas are a major pest species in Banyule.

Highly territorial, they outcompete native species for habitat. You can support efforts to control common mynas by planting indigenous shrub layers, covering compost and not leaving pet food out.

If you consistently see common mynas on your property, you can borrow a trap via our partner program with the Darebin Creek Management Committee.


Phone **9490 4222** and talk to our Biodiversity Advisor or find out more at [banyule.vic.gov.au/PestsWeeds](http://banyule.vic.gov.au/PestsWeeds)



## Winter energy saving tips

Join our workshops for practical tips to save energy in winter. If you're looking to upgrade your heating or hot water, learn more about heat pumps and split systems at our online information session. Or join our in-person workshop for practical energy tips to use at home.


### Heat pumps and split systems

 Tuesday 13 May, 6.30pm – 7.30pm

 Bellfield Community Hub

### No or low-cost energy tips

 Wednesday 28 May, 6.30pm – 7.30pm

 Online



This free workshop is part of the Banyule Loves... workshop series.

To see all the workshops, search 'Banyule City Council – Environment Team' at [humanitix.com](http://humanitix.com)  
Questions? Email us at [environment@banyule.vic.gov.au](mailto:environment@banyule.vic.gov.au)



## Shaping the future with reclaimed wood

*Reclaimed wood sculpture in Nellie Ibbott Reserve, Ivanhoe.  
Below: furniture in Were Street, Montmorency.*

### Banyule's timber repurposing program began in 2020 from a simple idea to take discarded wood and give it new life.

We started with trees that had fallen or been damaged during storms, finding practical and creative ways to use this resource. Previously they had been discarded or chipped for garden mulch.

More recently, we've worked with North East Link and the Level Crossing Removal Authority to secure trees felled during construction of these major projects.

What had been considered waste is now being turned into furniture, sculptures and nature play elements in Banyule's playgrounds and parks. The timber also makes great habitat logs in our bushland reserves. Even the sawdust from timber milling is used in local community gardens.

Council's Urban Forestry and Open Space Planning teams work together to source and use the timber. We also work with local artists, environmentalists, landscapers, timber millers and community groups who have a common interest in recycling and community facilities.

Banyule's timber repurposing program shows that with creativity, ingenuity and care, the past can shape the future in beautiful, sustainable ways.



## Could you be a crossing supervisor?

Crossing supervisor Ray recommends the job after years of keeping school students and residents safe crossing busy Graham Road in Viewbank. "It's a worthwhile job that keeps my mind sharp and gives me a routine," he said. Ray can also fit in other occasional work as a production planner.

Do you enjoy working outdoors and meeting new people? Would you like to earn extra income during your free time before and after school?

We're looking for responsible and reliable people to join our team of school crossing supervisors across Banyule. We'll train you and provide a uniform. If you're interested, phone our Customer Service team on **9490 4222**.





# No project parking

**We understand frustrations around car parking for people living in the streets around the North East Link Project.**

While it's the responsibility of North East Link to provide adequate parking for its workforce, Council is doing everything we can to support locals. So far, we've:

- Introduced new parking restrictions along 35 streets, which we will continue to review and change as needed;
- Regularly enforced resident-only zones;
- Pushed North East Link for more onsite parking and better parking enforcement from their team.

Council has even offered land for worker parking, an offer that is still on the table.

**If you have concerns, you can:**

- Contact North East Link on 1800 105 105
- Get in touch with Council by phone or email if you'd like a parking enforcement officer to attend your street.



## Celebrating Banyule's volunteers

### National Volunteer Week 19 – 25 May

National Volunteer Week is a chance to recognise and celebrate the vital work of volunteers in our community.

This year's theme, Connecting Communities, acknowledges the impact of volunteers in building inclusive and flourishing communities.

### Banyule Volunteer Celebration

Banyule's annual Volunteer Celebration will be held in The Centre Ivanhoe during National Volunteers Week.

Awards will be presented to volunteers nominated by community members. You'll find the list of recipients on our website at the end of the month.

### Give and take of volunteering

When most of us are pulling up the doona and sheltering from the storm, Andrea is in the thick of it, answering calls for help.

As a volunteer member of the Heidelberg unit of the State Emergency Service, you will find her removing trees that have fallen on roads and houses, repairing damaged roofs or managing flood waters. The unit, which is entirely staffed by volunteers, also helps police in missing person searches and supports the CFA during bushfires.

Heidelberg SES has around 60 members who respond to more than 1000 requests for assistance each year.

"Going out on a cold, windy and rainy night is the least enjoyable part of the role, but the feel-good factor of knowing you've assisted someone who is in need quickly overrides any disgruntled thoughts of being cold and wet," said Andrea, pictured below and above, front centre, with fellow SES volunteers.

"It's great to give back to the community. I've learned some great skills and I've made some great friends too."



## Fact check

### Does Council use artificial intelligence to issue parking fines?

#### Council does not use artificial intelligence (AI) to issue parking fines.

A video circulated online recently claimed Council uses artificial intelligence (AI) to automatically fine people who park illegally.

This claim is incorrect. Council does not use AI technology to issue fines. All fines are issued by authorised officers.

The fine in question was issued via mail after an officer observed a parking offence, but could not attach the notice to the vehicle. This is a standard process and has nothing to do with AI.

Stopping any vehicle in a 'no stopping' zone may result in a \$119 fine issued by our parking officers.

## BANYULE COMMUNITY FUND



Heidelberg SES was among the volunteer organisations to receive funding in the first round of grants from the Banyule Community Fund.

The SES received \$2500 for the purchase of battery-operated power tools that are quieter, easier and safer to use and more environmentally friendly than petrol equipment.

### Give Local with Banyule Community Fund

Scan the code to find out more  
or head to [banyule.vic.gov.au/BCF](https://banyule.vic.gov.au/BCF)







# Chillin' in Banyule

Chill locally this autumn with local musicians in local venues



**Friday 2 May**

**Stella Anning**

Ivanhoe Library & Cultural Hub, 6.30pm

**Paul Molloy**

Oregon Xpress, 7pm

**Saturday 3 May**

**Things We Built**

Macleod Park Rotunda, 12pm

**Emily Soon**

Imbue Distillery, 5pm

**Sunday 4 May**

**Cara-May**

Cinnamon Grove Café, 11.30am

**Dan James**

Vino Central, 6pm

**Thursday 8 May**

**Moose & Caz**

Jaga Jaga, 6pm

**Friday 9 May**

**Conte Milano**

Ivanhoe Library & Cultural Hub, 10.30am

**Benjamin Langdon**

Eaglemont Cellars, 7pm

**Gordon Lewis**

The Bearded Pig, 6pm

**Saturday 10 May**

**Siren**

Montmorency Reserve, 11am

**Katankin**

Joia Cucina, 1pm

**Darcy Fox**

Oregon Xpress, 4pm

**Sunday 11 May**

**(Mother's Day)**

**Pablo Naranjo**

Vino Central, 5.30pm

**Thursday 15 May**

**Melanie Wilson Music**

Joia Cucina, 6pm

**Friday 16 May**

**Sinead B-C Music**

Ivanhoe Library & Cultural Hub, 2pm

**Sage Marie**

Imbue Distillery, 5.30pm

**Saturday 17 May**

**Isabelle Davis**

Cinnamon Grove Café, 11.30am

**Sundat 18 May**

**Everyday Wonder**

Macleod Park Rotunda, 12pm

**Xadi Keta**

Eaglemont Cellars, 5pm

**Thursday 22 May**

**DJ Ming Ming**

Jaga Jaga, 7.30pm

**Friday 23 May**

**Carl Pannuzzo**

Eaglemont Cellars, 1pm

**Darcy Giuliani**

Ivanhoe Library & Cultural Hub, 4pm

**Toby Aitken Duo**

The Bearded Pig, 6.30pm

**Saturday 24 May**

**Sweet Nothings**

Montmorency Reserve, 11am

**DoubleRDuo**

Vino Central, 7.30pm

**Sunday 25 May**

**Gary's Musical**

**Smorgasbord**

Joia Cucina, 2pm

**Full Moon Suns**

Jaga Jaga, 4.30pm

**Full program and bookings**

[banyule.vic.gov.au/chillin](http://banyule.vic.gov.au/chillin)



# Ivanhoe Library & Cultural Hub

## Events & activities

### Banyule Art Salon 2025



**Banyule's biggest community art exhibition**

3 May – 22 June

Art Gallery 275

This year, in celebration of our local heritage, the community was invited to create artworks that responded to, or are inspired by, the Heidelberg School of art.

The first significant colonial art movement in Australia, the Heidelberg School was named for a group of artists who set up an outdoor painting camp in the area, capturing the raw beauty of the landscape here, alongside impressions of early settler life.

The community's response to these artworks will surprise, delight and maybe even inspire you to create your own masterpiece.



275 Upper Heidelberg Rd, Ivanhoe  
[banyule.vic.gov.au/ILCH](http://banyule.vic.gov.au/ILCH)  
[arts@banyule.vic.gov.au](mailto:arts@banyule.vic.gov.au)  
9490 4222

**Art Gallery 275:** Wed to Fri 10am – 5pm, Sat 10am – 4pm, Sun 11am – 4pm (Mon & Tue closed)  
**Loft 275:** open during library hours

## De Espinas y Flores

**(‘Of Thorns and Flowers’)**  
**By Iaki Vallejo**

21 May – 15 June  
Opening night: Thursday 22 May, 6pm - 8pm

Loft 275

A personal exploration of identity and existence, where both thorns and flowers shape our journey beyond the physical, into the spiritual and eternal.

*Image: La Luz Conoce el Camino ('Light knows the way') 2025, by Iaki Vallejo*



## Early Impressions

**Painters of the Heidelberg School from the National Collection**

### Exhibition dates coming soon

In the February Banyule Banner, we published a story highlighting that *Early Impressions – Painters of the Heidelberg School from the National Collection* was coming to Banyule.

We are working on the final touches to present these beautiful and significant works to you. This includes meeting some technical requirements for our gallery that are set by the National Gallery of Australia.

The works will be on loan to Council for two years, so there will be plenty of time to enjoy and connect with the collection once it opens.

We apologise for any inconvenience.

Visit our website for updates:  
[banyule.vic.gov.au/HeidelbergSchool](http://banyule.vic.gov.au/HeidelbergSchool)





# Fight the flu before it fights you

Council is running public flu vaccination clinics this autumn. Protect yourself this winter and book in for your flu shot.

These clinics are for flu vaccinations only. The vaccination is free for children aged 6 months to under 5 years and \$25 for everyone aged between 5 and 65.

If you are aged over 65, please contact your local GP.

## Business flu vaccinations

Help your employees stay healthy this flu season.

Council offers on-site flu vaccination sessions at your workplace. For \$25 per vaccine, we will send an immunisation nurse to vaccinate your staff against the flu.

A minimum of 20 vaccinations is required to book. Call 9457 9964 or email [immunisation@banyule.vic.gov.au](mailto:immunisation@banyule.vic.gov.au)

## May flu vaccination clinics

WaterMarc, 1 Flintoff Street, Greensborough

Saturday 10 May, 10am – 12pm

Ivanhoe Library and Cultural Hub

Wednesday 21 May, 5.30pm – 7pm

Check for more sessions and book at [banyule.vic.gov.au/immunisation](http://banyule.vic.gov.au/immunisation) or phone 9457 9964.



## Lest we forget

The Homefront sculptures, a series of carved wood figures in Greensborough War Memorial Park, are a beautiful reminder of all those who served.

On Anzac Day the park is a place for quiet reflection amidst the many memorial services and gatherings held throughout Banyule.

Created by local artist Leigh Conkie and master carver Hikaru Kodama in 2018, the sculptures celebrate the resilience of service men, women, their families and communities.

The World War I nurse sculpture represents one of the roles that women have played in war. She is on duty, represented by the pile of blankets she carries and the absence of the traveling cape.

The kookaburra that sits behind her is a symbol of home. Beneath it is a sprig of gumleaves and gumnuts forged in steel, representing the link to Australia carried in the hearts of those who are deployed overseas.

This sculpture also acknowledges one of the Homefront project partners, Austin Health, particularly the Heidelberg Repatriation Hospital. An iconic facility in Banyule, ‘the Repat’ opened in 1941 as the 115th Heidelberg Military Hospital.

Discover more Homefront sculptures and stories at [banyule.vic.gov.au/homefront](http://banyule.vic.gov.au/homefront)



# Ward Rounds

Banyule is made up of nine wards. To find out which ward you belong to scan the code



Cr Peter Castaldo  
Griffin Ward

[peter.castaldo@banyule.vic.gov.au](mailto:peter.castaldo@banyule.vic.gov.au)  
0466 502 698

Thanks to everyone who gave us their thoughts on sport and recreation and staying active in Banyule. Council’s draft Active Banyule Plan will soon be open for public comment.

Research shows that being active, connecting with others and spending time in nature positively impacts our physical, mental and emotional health. We want to know how to help you stay active and connected, whether you’re

into competitive sports, bike riding, dancing or walking the dog. Better sports facilities, more low-cost activities, increased tree canopy for shade on footpaths – it’s all part of the picture. Head to [shaping.banyule.vic.gov.au/ActiveBanyule](http://shaping.banyule.vic.gov.au/ActiveBanyule) and click on the ‘+ Follow’ button to receive project updates. We’ll let you know when the draft plan is open for comment.



Cr Alison Champion  
Sherbourne Ward

[alison.champion@banyule.vic.gov.au](mailto:alison.champion@banyule.vic.gov.au)  
0466 486 593

I checked out the new 2km shared user path along Para Road, Greensborough. It’s a great reason to get on your bike or take a walk!

Extensive new landscaping along the path will fill in over time. The gabion walls near the Para Road roundabout are a stand-out feature.

Completing the path has filled a missing link in the safe walking and

cycling route between Greensborough and Montmorency stations, also connecting to the Plenty River Trail. There’s a pedestrian crossing on Para Road at Paterson Crescent. Council built the section from Para Road roundabout to Paterson Crescent with funding from the Victorian Government’s Level Crossing Removal Project.



Cr Matt Wood  
Hawdon Ward

[matt.wood@banyule.vic.gov.au](mailto:matt.wood@banyule.vic.gov.au)  
0403 705 289

The temporary closure of lanes on Lower Plenty Road near the North East Link tunnel site has led to increased traffic along Hendersons and Banyule roads and on side streets in Yallambie and Viewbank.

I want to thank everyone for their patience, particularly the schools in the area, who are working to ensure the safety of children and families. Council is doing everything we can to support

Banyule residents inconvenienced by the North East Link build, including enforcement of “no project parking” zones. Read more on [page 14](#). It’s exciting to see work set to begin on the pavilion at Yallambie Park, home of Banyule Bulls soccer club. Council is building new changerooms, bathrooms, and undercover viewing area. There will also be a new public toilet block next to the pavilion.





# Ward Rounds

Banyule is made up of nine wards. To find out which ward you belong to scan the code



**Cr Elizabeth Nealy**  
Beale Ward

[elizabeth.nealy@banyule.vic.gov.au](mailto:elizabeth.nealy@banyule.vic.gov.au)  
0435 243 598

I'm pleased to see that work is underway on the new footpath on Karingal Drive, between Sherbourne Road and Nerreman Gateway in Briar Hill and Montmorency (works pictured behind me).

Residents have told me it's difficult to cross busy Karingal Drive due to safety barriers on the northern footpath side, so Council is also

constructing two new pedestrian crossings for more convenient and safer crossings. One will be near Allipol Court, Briar Hill and the other near Nerreman Gateway, Montmorency.

The \$386,000 project is funded by Council. Works are expected to be completed in May (weather permitting).



**Cr Mark Di Pasquale**  
Bakewell Ward

[mark.dipasquale@banyule.vic.gov.au](mailto:mark.dipasquale@banyule.vic.gov.au)  
0481 002 299

The new cricket nets are looking good at Greensborough War Memorial Park! There are four new practice pitches. Read more on **page 7**.

As well as delivering assets like the cricket nets, Council helps to strengthen our community by supporting local groups and organisations with annual financial

grants. Flourishing community groups are at the heart of Banyule, and I encourage groups like our local scouts to find out how you could benefit from a community grant.

Grant applications open on 30 June. Previous recipients include scout groups, sports clubs and more. See **page 10** for more information.



**Cr Alida McKern**  
Chelsworth Ward

[alida.mckern@banyule.vic.gov.au](mailto:alida.mckern@banyule.vic.gov.au)  
0435 316 318

Ivanhoe residents are keen gardeners, with beautiful productive gardens! Do you have excess home-grown produce? Here is an exciting new opportunity to swap food and conversation – the first ever Ivanhoe Home Grown Produce Swap is happening at Ivanhoe Library on Saturday 10 May from 10 am to 12pm. Please come along, even if you have no fresh produce to swap this time.

You'll learn about growing food plants, local community gardens and more. Local food swaps are one of the actions in Banyule's Urban Food Strategy. Contact Council to help you set up a food swap in your area. When I met with Vicky and Dona from Sustainable Community Ivanhoe, we found we had heaps of veggies, herbs and preserves to swap. See what the group is up to via their Facebook page.



**Cr Mary O'Kane**  
Olympia Ward

[mary.okane@banyule.vic.gov.au](mailto:mary.okane@banyule.vic.gov.au)  
0403 748 092

When finished mid-year, James Reserve's new playground will be so exciting! Its design is based on a popular children's book (can you guess?) and will include play areas and activities for a range of ages. The playground is the result of extensive consultation with our growing community.

Why are some playgrounds different from others?

There are four types of Council playgrounds.

Banyule has four regional parks, such as Malahang, which draw people from far and wide. Next, there are 56 neighbourhood parks, like James Reserve, which attract people from nearby suburbs. Third are the 54 local parks and fourth, 21 pocket parks used mostly by those who live within walking distance.



**Cr Rick Garotti**  
Grimshaw Ward

[rick.garotti@banyule.vic.gov.au](mailto:rick.garotti@banyule.vic.gov.au)  
0490 014 965

I'm inspired by Bundoora resident Shannon Ryan, who is preparing to run the 2026 New York City Marathon. Diagnosed with type 1 diabetes (T1D) when eight years old, Shannon aims to raise \$200,000 for T1D research. Follow his journey and donate at [bluearmy.breakthrough1d.org.au/s/4937/4637](https://bluearmy.breakthrough1d.org.au/s/4937/4637) or email [shannonsnym2026journey@gmail.com](mailto:shannonsnym2026journey@gmail.com)

I moved a motion at the 24 March Council meeting for Council to produce a report on homelessness and cost-of-living pressures and how we can help Banyule residents who are doing it tough. We are doing a lot of work and there are limits to what we can do as a Council, but I will advocate as hard as I can for us to do as much as we possibly can to help. Stay tuned for more on this important topic.



**Cr Alicia Curry**  
Ibbott Ward

[alicia.curry@banyule.vic.gov.au](mailto:alicia.curry@banyule.vic.gov.au)  
0403 736 326

Rosanna Primary School is one of 12 schools that have signed up for Council's Active to School program, which encourages students and families to enjoy the benefits of safe and active travel to and from school. I was impressed to see so many families walking and riding bikes and scooters when I visited one morning recently. It was great to see students

enthusiastically taking the lead.

Active to school is a four-week program that can be delivered in any school term. Council helps with maps and research on safe walking and riding routes, posters, school events and curriculum resources.

It's not too late to sign up for 2025. Email Council's Transport team at [activetravel@banyule.vic.gov.au](mailto:activetravel@banyule.vic.gov.au)





# Celebrating the best of fests

As the days get shorter, our focus turns indoors for cosy gigs in local venues, with events like **Chillin' in Banyule** (program on page 16). The long, warm days of summer and autumn are our major festival season.



Council's Arts and Culture team works hard to offer something for all ages and interests and to make our events safe, inclusive and free or low-cost. Here's a wrap of our most successful festival season ever.

## YouthFest

**Macleod Park, September**  
**Attendance:** 6500

By young people, for young people. Music by local young performers, rides, clothes swap, workshops, sports, giveaways and more.

## Malahang Community Festival

**Malahang Reserve, November**  
**Attendance:** 2000

Increased number of stallholders, performers and activities, almost exclusively by local artists and organisations. Attendance slightly down due to limited advertising during the election period and poor weather, but community feedback was extremely positive.

## Carols by Candlelight

**Greensborough War Memorial Park, December**  
**Attendance:** 8000

Our largest festival attendance ever. New program hosted by local celebrity Wilbur Wilde, with high-profile artists, choirs and local community groups performing.

## Twilight Sounds

**Heidelberg Park, February**  
**Attendance:** 3000

Those who braved the unseasonal cold snap were rewarded with sensational music by eight national and local acts.

## Lantern Festival

**Malahang Reserve, March**  
**Attendance:** 7000

More than 50 lanterns plus roving performers, Neon Ngargee Kulin dance group and workshops for all ages. This biennial event continues to grow.

## Harmony Bazaar

**Binnak Park, March**  
**Attendance:** 1000

New family event with market stalls, food trucks and multicultural music and dance workshops, finished with an outdoor family movie.

## Outdoor Movies

**Ivanhoe, February**  
**Attendance:** 500

Free family films, with live music, a local coffee van and \$20 gift vouchers redeemable at East Ivanhoe Village eateries.

Above left: Crowd at Carols by Candlelight.  
Below: Murrundaya Yepengna Dancers, Lantern Festival



# Bushland Diaries

## Garden weeds and indigenous plant alternatives

Dainty swallowtail butterfly

**Removing invasive plant species from Banyule reserves is a big part of our Bushland Management Unit's work. Many of these weedy plant species are escapees from residential gardens.**

Exotic plants may look good in your garden, but they can escape into surrounding natural areas, eventually out-competing more desirable indigenous plants. Repeat offenders include agapanthus, brooms, ivy and grasses like couch and kikuyu. These and other exotic plants are a significant threat to our local environment. Their spread risks contributing to biodiversity decline if not managed correctly. Sadly, many of them are still available from retail nurseries.

Indigenous plant species are a much better choice for creating habitats that support native fauna while still being aesthetically pleasing. They also cut down on garden work like heavy pruning, mowing and watering!

Great indigenous plant alternatives include:

- Ground-story plants such as flax lilies (*Dianella sp.*) and purple coral pea (*Hardenbergia violacea*)
- Flowering plants like bluebells (*Wahlenbergia sp.*) and cut leaf daisy (*Brachyscome multifida*)

- Shrubs such as hop goodenia (*Goodenia ovata*), correas (*Correa sp.*) and wattles (*Acacia sp.*)
- Grasses like kangaroo grass (*Themeda triandra*), wallaby grasses (*Rytidosperma sp.*) and tussock grasses (*Poa sp.*).

There are many horticultural varieties of these indigenous plants available. The original indigenous species that are best suited to support our environment can be found at your local indigenous nurseries.

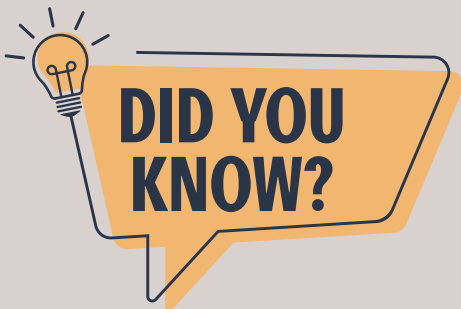
Check out our indigenous plant voucher program (details below). Let us give you a helping hand to start transforming your home garden into a beautiful space using indigenous plants!



Purple coral pea, a great indigenous ground cover.

## Indigenous plants vouchers – buy one, get one free!

Every Banyule address is eligible for one voucher each financial year. Get a free plant for every one that you buy, up to a maximum of 10. Redeem vouchers at Nangak Tamboree Indigenous Plant Nursery, La Trobe University Bundoora campus. Visit [banyule.vic.gov.au/IndigenousPlants](http://banyule.vic.gov.au/IndigenousPlants) or scan the QR code.



International Nurses Day is celebrated each year on May 12. This is the birth date of Florence Nightingale, the founder of modern nursing.

In Banyule, there are more than 2000 residents who work in nursing and midwifery.

Find out more about Banyule's population at [profile.id.com.au/banyule](http://profile.id.com.au/banyule)





# CHILL LOCALLY THIS AUTUMN LIVE MUSIC

SHOWCASING UP AND COMING LOCAL MUSICIANS  
PERFORMING ACROSS BANYULE

MAY 2025

[BANYULE.VIC.GOV.AU/CHILLIN](https://www.banyule.vic.gov.au/chillin)

SEE THE FULL PROGRAM ON PAGE 16



## Contact us

### All enquiries

PO Box 94, Greensborough, VIC 3088  
Phone 9490 4222  
[enquiries@banyule.vic.gov.au](mailto:enquiries@banyule.vic.gov.au)  
[banyule.vic.gov.au](https://www.banyule.vic.gov.au)

### Council Service Centres

Greensborough 1 Flintoff St  
Ivanhoe 275 Upper Heidelberg Rd

### Hearing or speech impaired

Call us through the National Relay  
Service on 133 677 (TTY) or 1300 555  
727 (ordinary handset) and contact  
9490 4222.

## Interpreter service

إذا كنتم بحاجة إلى مترجم يرجى الاتصال  
بالخط القومي للترجمة الهاتفية على الرقم  
131 450 وطلب إيصالكم ببلدية بانيول على  
الرقم 9490 4222.

如果你需要一名翻译, 请打电话到国家电话翻译服务处  
(TIS National) 131 450, 再转接到  
Banyule市政府9490 4222

若你需要口譯員, 請致電  
131 450聯絡TIS National,  
要求他們為你致電9490 4222  
接通Banyule市政廳。

Ako vam je potreban tumač,  
molimo vas, nazovite TIS  
National na broj 131 450 i  
zatražite da vas se spoji sa  
Vijećim općine Banyule na  
broj 9490 4222.

Se hai bisogno di un interprete  
chiama TIS National al numero  
131 450 e chiedi di essere messo  
in comunicazione con il Comune  
di Bayule al numero 9490 4222.

Αν χρειάζεστε διερμηνέα  
τηλεφωνήστε στην Εθνική  
Υπηρεσία Διερμηνέων  
Μεταφραστών στον αριθμό  
131 450 και ζητήστε να σας  
συνδέσουν με τη Δημαρχία  
Banyule στο 9490 4222.

Ако ви треба преведувач  
ве молиме јавете се на TIS  
NATIONAL на 131 450 и  
замовете да ве поврзат со  
Banyule Council на 9490 4222.

Haddii aad u baahan tahay  
mutarjum wac khadka qaranka  
oo ah TIS 131 450 weydiina in  
lagugu xiro Degmada Banyule  
tel: 9490 4222.

Nếu cần thông dịch, xin gọi cho  
TIS Toàn Quốc qua số  
131 450 rồi nhờ họ gọi cho  
Hội Đồng Thành Phố Banyule  
theo số 9490 4222 giúp quý vị.