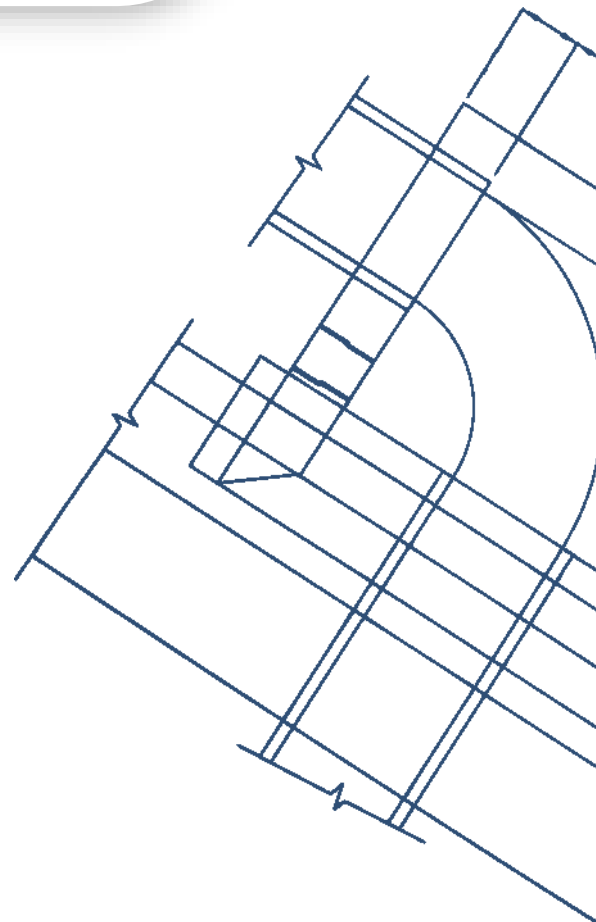
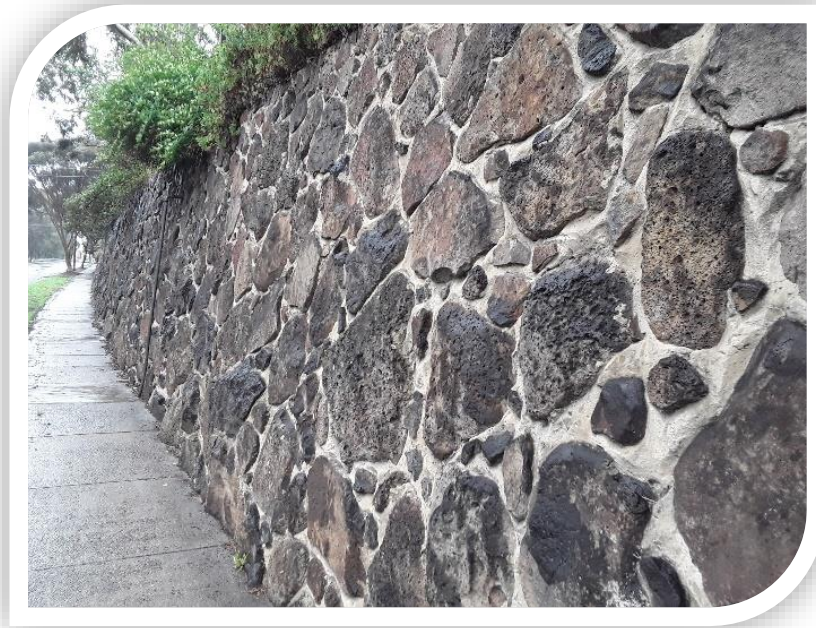
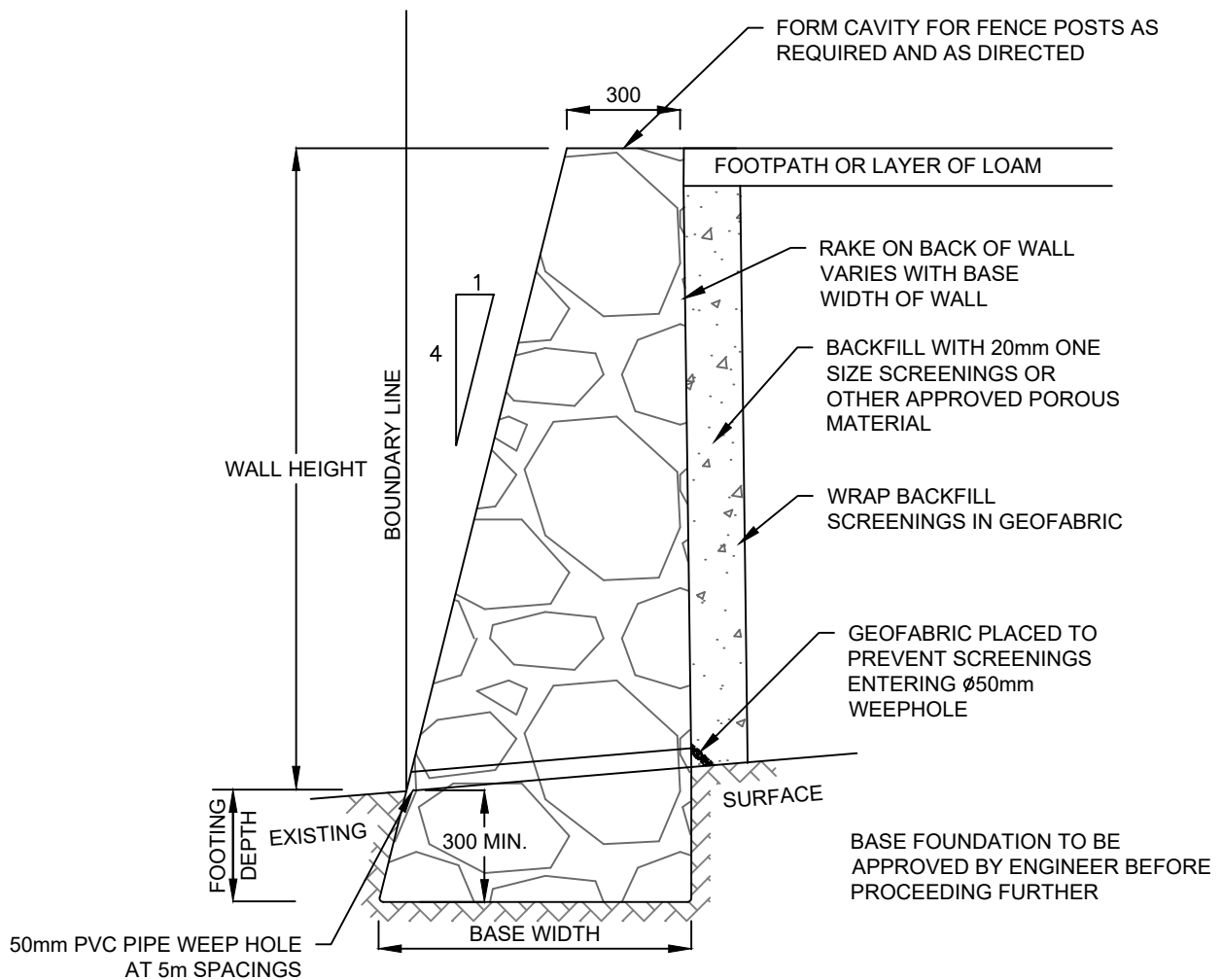


# Retaining walls

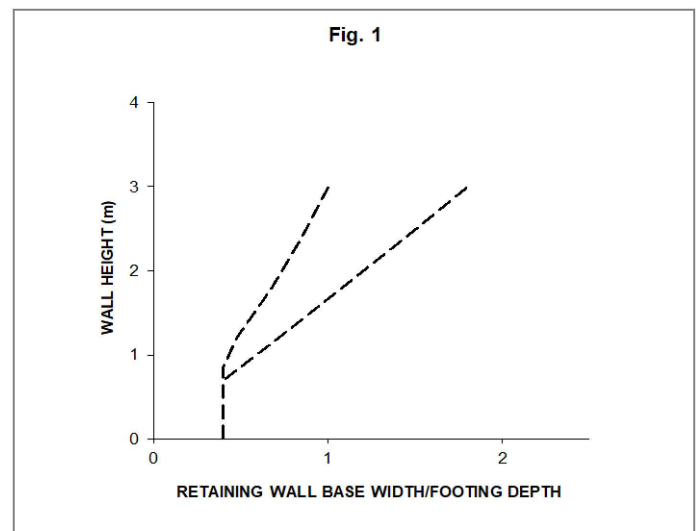


**This page was intentionally left blank**



NOTE: FOR WALL HEIGHTS, FOOTING DEPTH AND BASE WIDTHS NOT SHOWN ON TABLE SEE FIG 1.

WALL HEIGHT (m)	FOOTING DEPTH (m)	BASE WIDTH (m)
1.2	0.48	0.72
1.8	0.68	1.08
2.4	0.85	1.45
3.0	1.00	1.80



ALL MEASUREMENTS IN MILLIMETRES

## LOW SIDE STONE RETAINING WALL

LAST UPDATED JULY 2019



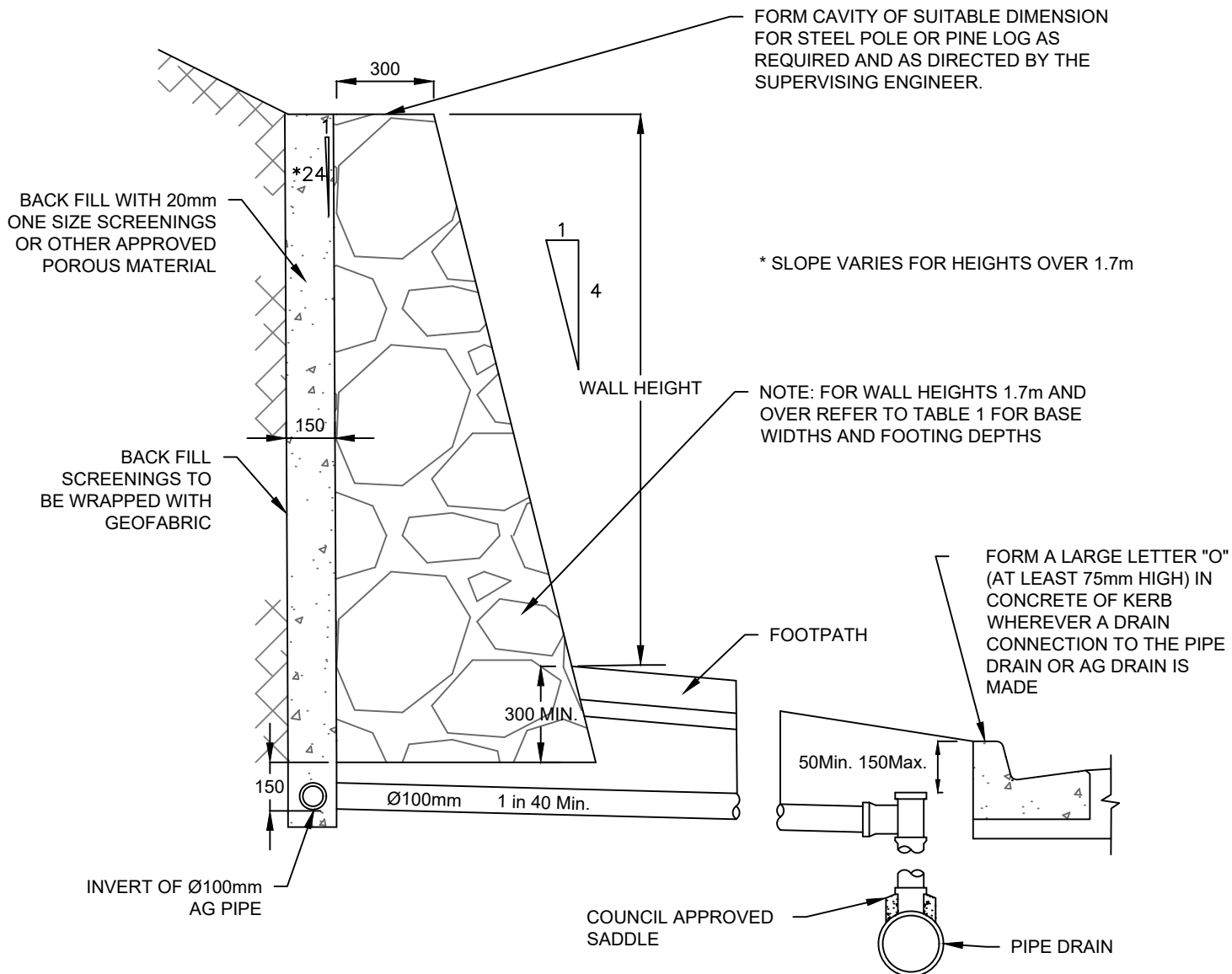
**Banyule**  
CITY COUNCIL

Banyule's Standard Drawings  
A copy can be found on Banyule's website  
[www.banyule.vic.gov.au](http://www.banyule.vic.gov.au)

# A 100

Approved by: James Kelly  
Manager Delivery & Assets

NOT TO SCALE



**NOTE:**

STONE SHALL BE CLEAN SOUND HARD BLUESTONE OR OTHER APPROVED HARD STONE IN SELECTED COLOUR TONINGS AND SHALL BE BUILT IN CONCRETE AS SPECIFIED. ALL SPACES BETWEEN STONES BEING COMPLETELY FILLED JOINTS ON THE EXPOSED FACE SHALL BE POINTED UP WITH MORTAR CONSISTING OF 1 PART CEMENT AND 5 PARTS APPR. SAND AND SHALL BE LEFT GENERALLY RECESSED BELOW THE FACE OF THE WALL AS DIRECTED

**TABLE 1**

FOR WALL HEIGHTS 1.7m AND OVER

WALL HEIGHT (m)	FOOTING DEPTH (m)	BASE WIDTH (m)
1.7	0.30	0.79
1.8	0.45	0.86
1.9	0.45	0.91
2.0	0.45	0.96
2.1	0.45	1.01
2.2	0.45	1.06
2.3	0.45	1.10
2.4	0.45	1.17
2.5	0.45	1.23
2.6	0.45	1.27
2.7	0.45	1.31
2.8	0.60	1.36
2.9	0.60	1.41
3.0	0.60	1.45

ALL MEASUREMENTS IN MILLIMETRES



**HIGH SIDE STONE RETAINING WALL**

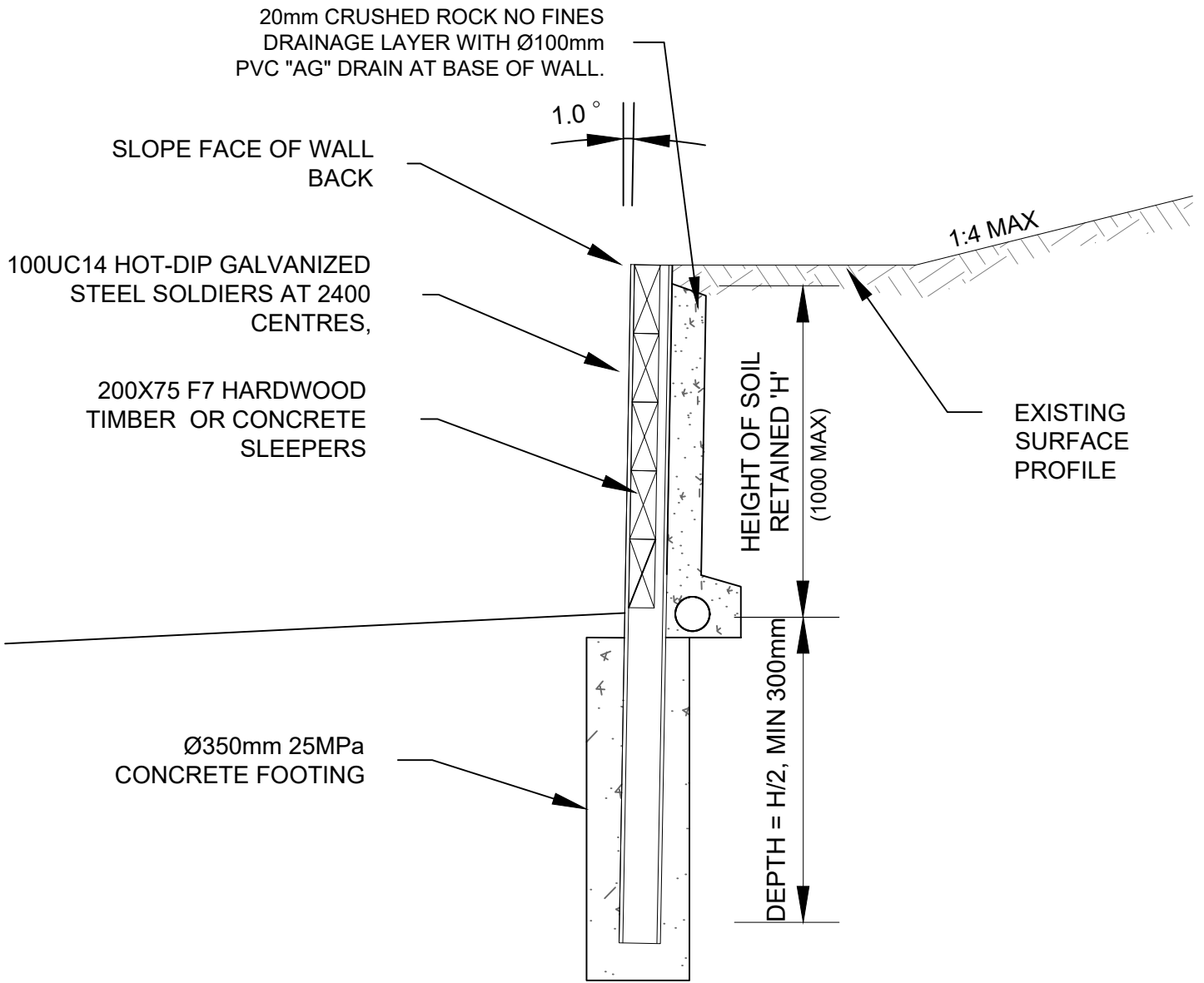
Banyule's Standard Drawings  
A copy can be found on Banyule's website  
[www.banyule.vic.gov.au](http://www.banyule.vic.gov.au)

Approved by: James Kelly  
Manager Delivery & Assets

LAST UPDATED JULY 2019

**A 105**

**NOT TO SCALE**



## TYPICAL SECTION

ALL MEASUREMENTS IN MILLIMETRES



**Banyule**  
CITY COUNCIL

### TIMBER SLEEPER RETAINING WALL

Banyule's Standard Drawings  
A copy can be found on Banyule's website  
[www.banyule.vic.gov.au](http://www.banyule.vic.gov.au)

Approved by: James Kelly  
Manager Delivery & Assets

LAST UPDATED JULY 2019

# A 110

NOT TO SCALE

**This page was intentionally left blank**