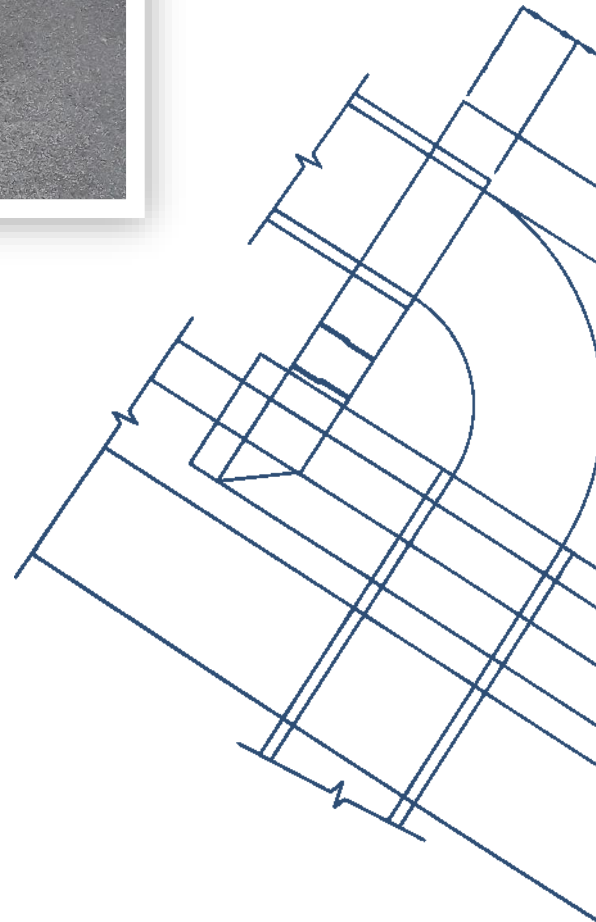
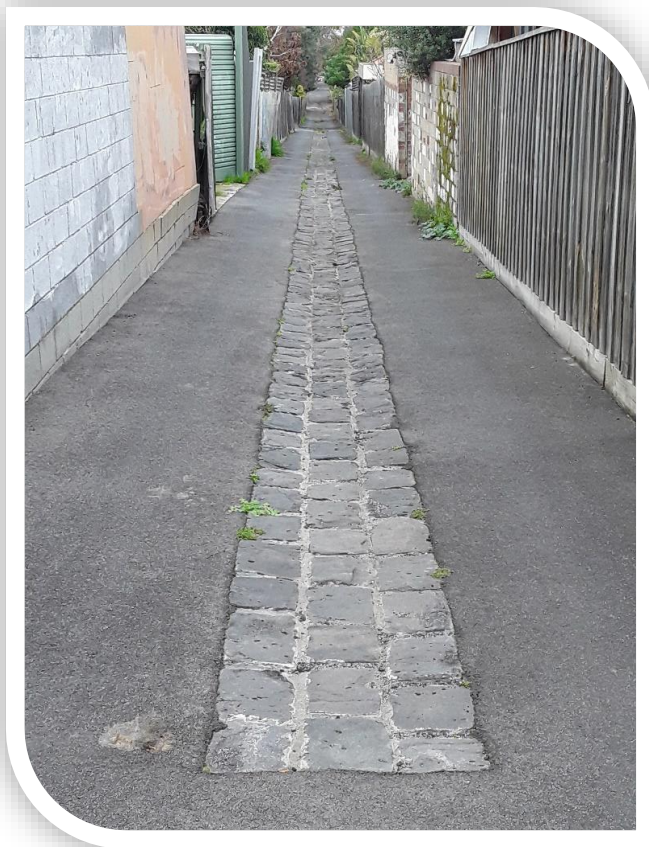
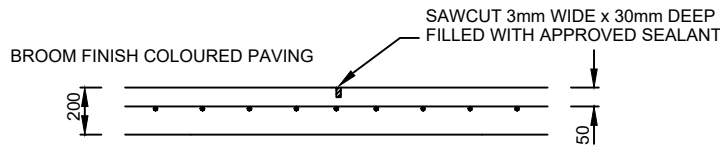
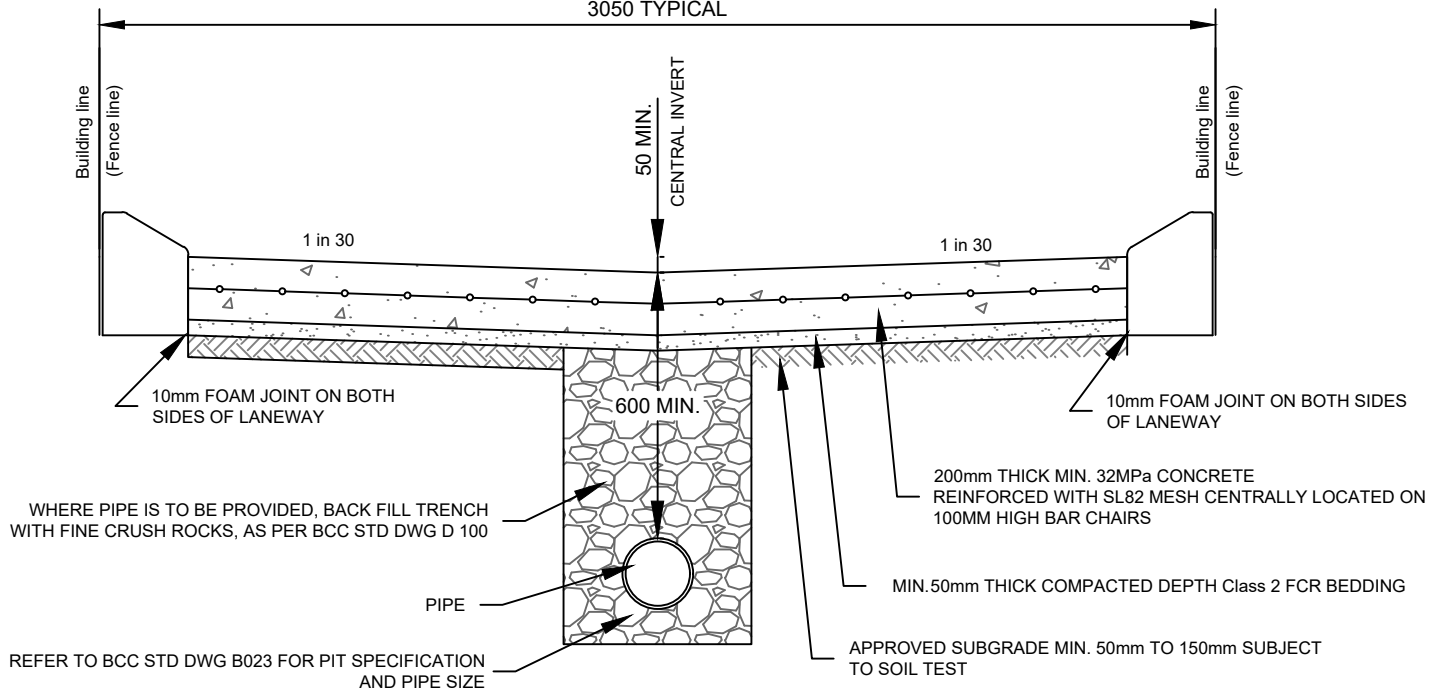


Other



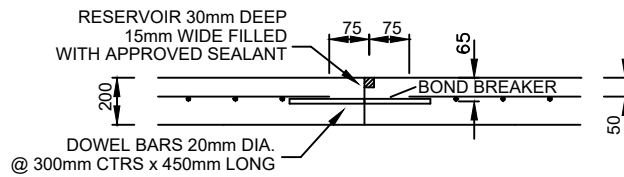
This page was intentionally left blank

3050 TYPICAL



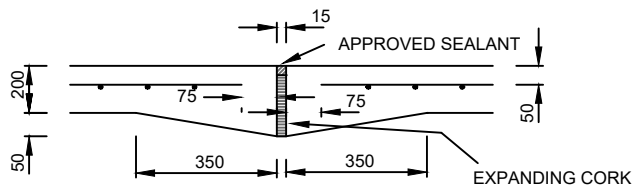
SAWCUT JOINT

PLACE AT MAXIMUM 2m SPACING
SAWCUT TO BE MADE 18-24 HOURS AFTER POURING



CONSTRUCTION JOINT

PLACE AT LOCATIONS MARKED ON PLANS PLUS TRANSVERSE JOINTS
MAXIMUM OF 15m SPACING



EXPANSION & ISOLATION JOINT

PLACE AROUND PITS & ALONG ALL EDGES OF STRUCTURES

NOTES:

1. CONCRETE STRENGTH SHOULD BE MIN. 25MPa TO 32MPa, SEASON DEPENDENT, SUBJECT TO BCC APPROVAL
2. SUBGRADE TO BE GRADED AND ROLLED TO THE SATISFACTION OF COUNCIL'S SUPERINTENDENT PRIOR LAYING CONCRETE
3. PREVAILING SUGARED CONDITIONS DETERMENT THICKENS OF BEDDING, SUBJECT TO BCC APPROVAL
4. EXPANSION JOINTS TO BE EVERY 12 METERS AND AROUND POLES, MANEHOLES AND OTHER SERVICE AUTHORITY FIXTURES
5. CHAIRS TO BE USED TO SUPPORT F82x2 REINFORCEMENT MESH
6. SURFACE FINISH IS TO BE A ROUGH BROOM FINISH
7. PIT COVERS TO BE HEAVY DUTY GATIC LIDS OR BIKE SAFE GRATED COVERS, SUBJECT TO BCC APPROVAL
8. TRAFFIC SIGNS AND LINEMARKING REQUIRED TO BE APPROVED BY BCC TRANSPORT UNIT
9. MAINTENANCE PERIOD OF 12 MONTHS IS REQUIRED FROM COMPLETION OF WORKS

ALL MEASUREMENTS IN MILLIMETRES



Banyule
CITY COUNCIL

LANEWAY TYPICAL SECTION

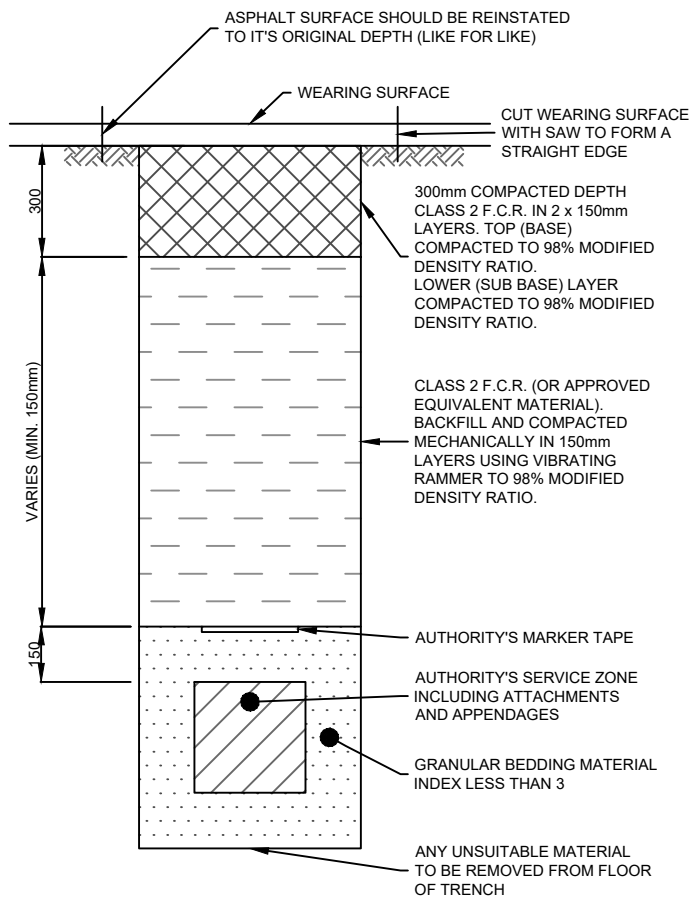
Banyule's Standard Drawings
A copy can be found on Banyule's website
www.banyule.vic.gov.au

Approved by: James Kelly
Manager Delivery & Assets

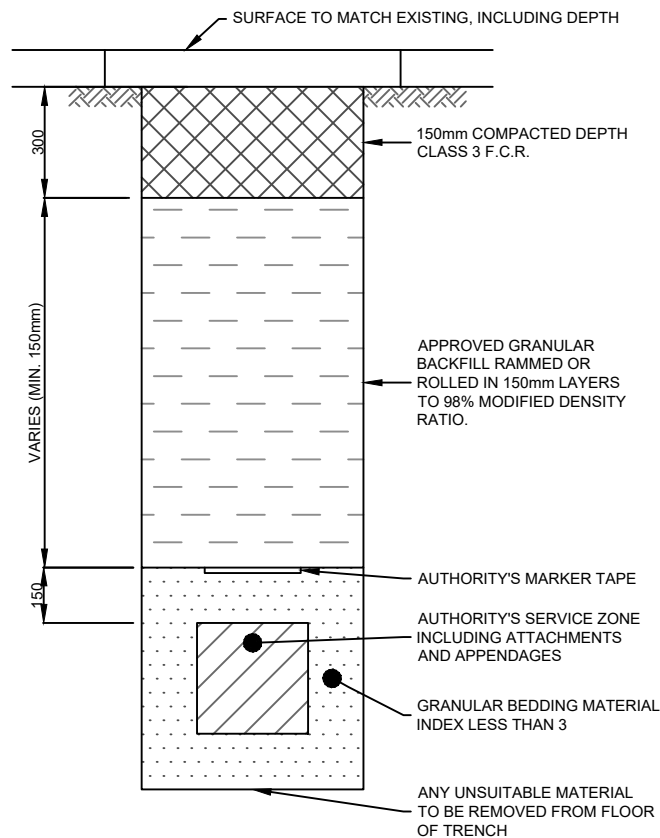
LAST UPDATED JULY 2019

A 200

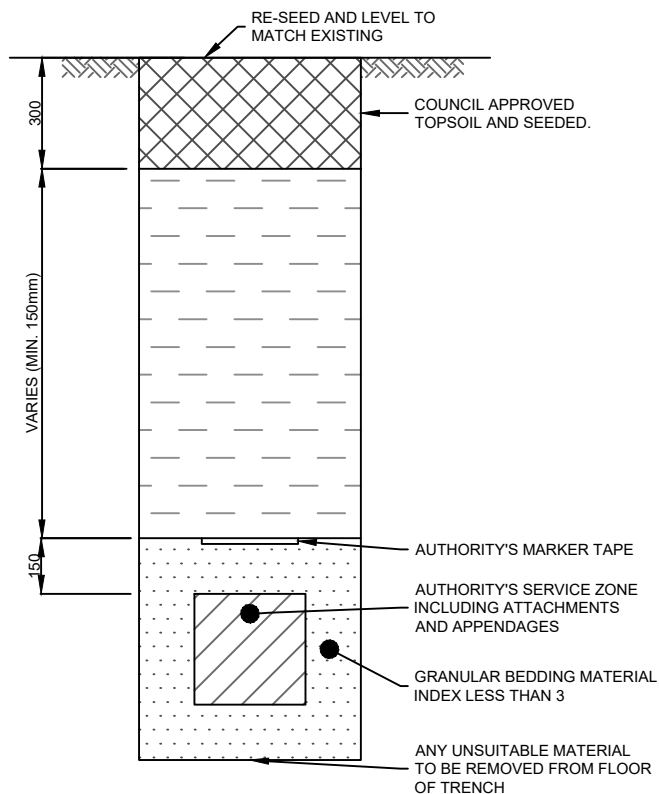
NOT TO SCALE



TRENCHES UNDER ROADS



TRENCHES UNDER FOOTPATHS



TRENCHES UNDER SWALES

NOTES:

1. COMPULSORY MEASURES FOR THE PROTECTION OF TRENCHES 1.5 OR MORE IN DEPTH ARE TO COMPLY WITH THE REQUIREMENTS OF THE MINES ACT 1958 & OH&S ACT 1985.
2. BITUMEN ROAD SURFACE SHALL BE CUT WITH A APPROPRIATE EQUIPMENT (ROAD SAW, DEMO SAW).
3. UNDER THE ROAD MANAGEMENT ACT 2004 THESE WORKS SHALL BE GUARANTEED FOR 12 MONTHS.
4. ALL WORKS TO BE COMPACTED TO THE SATISFACTION OF COUNCIL

ALL MEASUREMENTS IN MILLIMETRES



Banyule
CITY COUNCIL

TRENCHING BACKFILL
(TRENCHES WITHIN 1m OF COUNCIL ASSETS)

Banyule's Standard Drawings
A copy can be found on Banyule's website
www.banyule.vic.gov.au

Approved by: James Kelly
Manager Delivery & Assets

LAST UPDATED JULY 2019

A 205

NOT TO SCALE

This page was intentionally left blank