

Garden Design

Gardens can provide habitat for local animals, provide play spaces for children, produce vegetables and be a place to relax or entertain. Consider these when you create your design.



1. Visit public gardens and parklands. Take photographs of scenes that you like and ask the garden managers for planting lists. Use books and magazines to find pictures of gardens that appeal to you. Consider the environmental impact of different types of gardens. Manicured lawns require a lot of water and time to maintain.

2. Sketch your garden from a birds-eye-view. Mark the location of existing trees, lawn, sheds, paths and other features you want to keep.

3. Look at your garden at different times of day and in different seasons. Locate the wet and dry spots, sunny and shady spots. Record these in your sketch map.

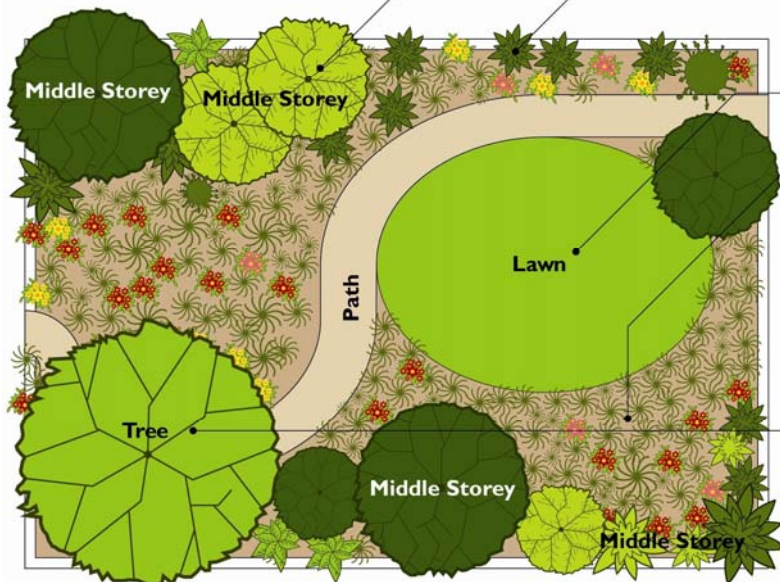
4. On scrap paper draw the features you would like to add to your garden using the same scale as your sketch map. These features may include a vegetable patch, a pond, a lawn area, garden beds and trees. Move them around your sketch map considering the location of existing features and conditions. For example, you may want to put your vegetable patch in a sunny spot near a water tank and locate new large trees away from powerlines.

5. Move around your garden with your sketch map. Imagine the space with the planned features in place. Visualise the views you are creating from windows and the views you may be blocking. Imagine how you will move through the space when the new features are in place and make changes required.

6. Use string and wooden pegs to mark out the location of new features. You will need to measure the size of different zones to calculate the quantity of materials to purchase. Your garden is now ready for implementation but before you start keep reading. Sections on mulching, weed control and plant selection will help you proceed.

If you're still looking for inspiration you may want to adapt the following designs to your space.

Bushland Garden



- Middle Storey**
 - Acacia acinacosa*
 - Bursaria spinosa*
 - Coprosma quadrifida*
 - Indigofera australis*
 - Goodenia ovata*
 - Carrea* spp.
 - Pomadouria caprea*
 - Rubus parvifolius*
 - Tetratheca ciliata*
- Indigenous Lawn**
 - Microsolenia stipoides*
 - Austroranthonia* spp.
 - Dichondra repens*
- Ground covers**
 - Dichelachne crenata*
 - Chloris truncata*
 - Austroranthonia caespitosa*
 - Brachyscome multifida*
 - Kennedia prostrata*
 - Bulbine bulbosa*
 - Antipogon strictum*
 - Dianella* spp.
 - Wahlenbergia* spp.
 - Leptorhynchus squamatus*
 - Chrysocephalum variabilis*
 - Chrysocephalum semipapposum*
 - Themeda triandra*
 - Lomandra filiformis*
 - Viola hederacea*
 - Pelargonium australe*
- Trees**
 - Eucalyptus polyanthemos*
 - Eucalyptus melanocarpa*
 - Acacia pycnantha*
 - Acacia melanocylon*

Cottage Style Herbaceous Garden



- Use a great variety of species for a less formal look. For a formal look choose only one species from each level and plant in rows.
- Low Plants**
 - Brachyscome multifida*
 - Chrysocephalum semipapposum*
 - Bulbine bulbosa*
 - Pelargonium australe*
 - Themeda triandra*
 - Dichelachne crenata*
 - Wahlenbergia* spp.
 - Medium Plants**
 - Tetratheca ciliata*
 - Poa* spp.
 - Lomandra longifolia*
 - Dianella* spp.
 - Carrea* spp.
 - Pimelea* spp.
 - Higher Plants**
 - Indigofera australis*
 - Kunzea ericoides* (use sparingly)
 - Goodenia ovata*
 - Acacia acinacosa*
 - Prostanthera lasiantha*
 - Indigenous Lawns**
 - Microsolenia stipoides*
 - Austroranthonia* spp.
 - Dichondra repens*

Design Ideas

Modern Garden

Design Ideas

